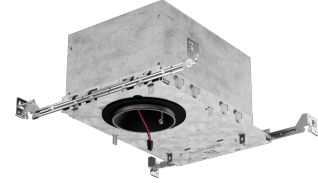


3" Koto™ Architectural Maximum Adjustability High Lumen IC Airtight Housing



Koto™ Architectural Housing: 120/277V (0-10V/Triac/ELV) or 120V (Triac/ELV), and ICALWN (Lutron Athena Wireless Node) with optional Emergency Battery Backup. Must be used with Koto™ Architectural LED Light Engines (ELK21 or ELK24 Series). Lumen output based on module.

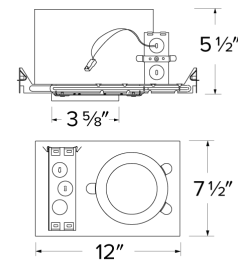
Features

- IC Airtight for direct contact with insulation.
- Easy-to-Remove driver.
- Optional 90 minutes, 120/277 VAC, 60Hz, Emergency Backup.
- MAX. 35° adjustability.
- Flicker-Free Dimming.
- USA designed and assembled.
- Integrated collar allows for use with 5/8" thick to 1 1/2" thick ceilings
- Limited 5 year warranty.
- For use with ELCO Koto™ Architectural LED Light Engines (ELK21 or ELK24 Series).

Specifications

Wattage	18.9W
Lumens	1650 (ELK21) - 1950 (ELK24) lm
Voltage	120/277V
Dimmable	0-10V/Triac/ELV (1% Dimming)
Lamp Type	LED
Power Factor	≥0.95
Damp Location	Listed

Dimensions



Technical Details

Construction: Double Wall IC Rated for direct contact with insulation. For use in IC and Non-IC conditions. Up to 1500 lumens. Housing adjusts in frame to accommodate up to 1 1/2" ceiling thickness. Airtight housing with gasket to restrict airflow in accordance with ASTM E-283 air-tight requirements.

Installation: Designed for ceiling plenums where 2x6 joists or taller are used. High strength hanger bars can easily be nailed to joists. Suitable for T-grid and drop ceiling applications. See installation sheet for detailed information. Emergency Battery Back-up Option requires access from above. For use with ELCO Koto™ Architectural LED Light Engines (ELK21 or ELK24 Series).

Junction Box: Positioned to accommodate straight conduit runs. Two 3/4" knockouts, Seven 1/2" trade size conduit knockouts, One 3/8" knockout. Four Pry-out knockout slots for easy romex installation.

Hanger Bars: Pre Installed hanger bars with True Nail easy installation in regular lumber, engineered lumber, and Laminated Beams. Integral T-bar slots for easy installation in T-Bars. Spans up 24" and can be repositioned 90°. Score lines allow for tool-free hanger bar size reduction. Integral leveling flange allows for single-person installation while easily aligning the housings with the joists.

Electrical: Driver is rated for 120V and 277V input (120/277V). High Efficiency driver with a power factor > 0.95.

Emergency Battery Pack: Optional 90 minute battery pack available with test indicator switch. Note that double wall housings require Access From Above Ceiling for Battery Maintenance.

Dimmability: 3-in-1 Dimming: Triac, ELV and 0-10V dimming in one driver. 0-10V Dimming down to 1% with a compatible dimmer. ICALWN - Lutron Athena Wireless Node. Can be specified with Lutron drivers for 0.1% and 1% dimming. For a full list of dimmers refer to the Dimmer Compatibility List.

Listings: cUL Listed for Damp Location and for Wet Location with select trims. cUL Listed for Direct Contact with Insulation and Combustible Material. cUL Listed for Feed Through.

Product Number

Item	Description	Lamp type	Lumens	Watts	Voltage	Dimming
E3LK85ICAD-L	High Lumen Maximum Adjustability Housing	LED	1650 (ELK21) - 1950 (ELK24) lm	18.9W	120/277V	0-10V/Triac/ELV (1% Dimming)

Product Number Builder

Example: **E3LK53ICA**

Koto™ Architectural Housing

Voltage (Wattage)

Dimming

E3LK

53 120V (15.7W) ¹

54 120/277V (15.7W) ²

84 120V (18.9W) ¹

85 120/277V (18.9W) ²

ICA Triac/ELV

ICAD 0-10V/Triac/ELV ³

ICAD-L 0-10V/Triac/ELV ³

ICADAL DALI2

ICALWN Lutron Athena Wireless

¹ Available as 120V, Triac/ELV only

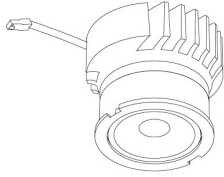
² Available as 120/277V, 0-10V/Triac/ELV only

³ 1% Dimming

Compatible Products

For use with Dedicated 3" Architectural ICA LED Housings

Koto™ Architectural LED Light Engine



Koto™ LED Light Engine
ELK21 & ELK24

PRODUCT NUMBER BUILDER			
Koto™ LED Light Engine	Lumens	Color Temperature	Beam Angle
ELK			
21	1100 - 1500 lm ¹	27D 2700K	(blank) 38° lens (Standard)
24	1100 - 1800 lm ¹	30D 3000K	-S 18° lens
		35D 3500K	-N 25° lens
		40D 4000K	-W 60° lens
			-FC 18° - 50° Adjustable (ELK21 Only)

¹Wattage based on housing.

ACCESSORIES



Lens

- EP731C** 18° Lens
- EP732C** 25° Lens
- EP733C** 38° Lens
- EP734C** 60° Lens

*EP732C, EP733C, EP734C Included



Snoot

- L50W** White
- L50B** Black



Secondary Optics

- L45** Hex Louver
- L46** Linear Lens
- L47** Spread Louver
- L49** Frosted Lens
- L51** Color Shifter

3" Pex™ Twist-&-Lock Trims



Deep Reflector

ELK3618
Finishes:
(W, BB, BZ, B, C, H)



Adjustable Gimbal

ELK3629
Finishes:
(W, BB, BZ, B, C, H)



Adjustable Pinhole

ELK3627
Finishes:
(B, BB, BZ)



Adjustable Baffle

ELK3693
Finishes:
(W)



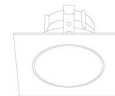
Slot Aperture

ELK3620
Finishes:
(W)



Adj. Reflector Wall Wash

ELK3622
Finishes:
(W)



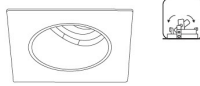
Sq. Deep Reflector

ELK3318
Finishes:
(W, BB, BZ, B, C, H)



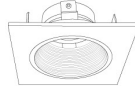
Sq. Adjustable Gimbal

ELK3329
Finishes:
(W, BB, BZ, B, C, H)



Sq. Adjustable Wall Wash

ELK3322
Finishes:
(W)



Sq. Adjustable Baffle

ELK3393
Finishes:
(W)



Sq. Adjustable Pinhole

ELK3327
Finishes:
(B, BB, BZ)

*Finishes: **W** - All White, **BB** - All Black, **BZ** - All Bronze, **B** - Black Reflector w/White Ring, **C** - Chrome Reflector w/White Ring, **H** - Haze Reflector w/White Ring



Must be used with Maximum Adjustability Housing