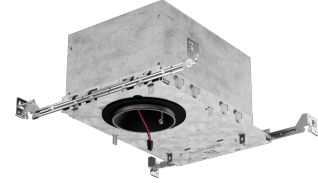


# 3" Koto™ Architectural Maximum Adjustability High Lumen IC Airtight Housing



Koto™ Architectural Housing: 120/277V (0-10V/Triac/ELV) or 120V (Triac/ELV), and ICALWN (Lutron Athena Wireless Node) with optional Emergency Battery Backup. Must be used with Koto™ Architectural LED Light Engines (ELK21 or ELK24 Series). Lumen output based on module.

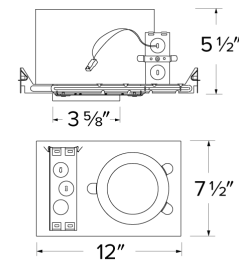
## Features

- IC Airtight for direct contact with insulation.
- Easy-to-Remove driver.
- Optional 90 minutes, 120/277 VAC, 60Hz, Emergency Backup.
- MAX. 35° adjustability.
- Flicker-Free Dimming.
- USA designed and assembled.
- Limited 5 year warranty.
- For use with ELCO Koto™ Architectural LED Light Engines (ELK21 or ELK24 Series).

## Specifications

<b>Wattage</b>	15.7W - 18.9W
<b>Lumens</b>	1250 lm - 1500 lm
<b>Voltage</b>	120/277V or 120V
<b>Dimmable</b>	Triac/ELV, 0-10V/Triac/ELV (1% Dimming), DALI 2
<b>Lamp Type</b>	LED
<b>Power Factor</b>	≥0.95
<b>Damp Location</b>	Listed

## Dimensions



## Technical Details

**Construction:** Double Wall IC Rated for direct contact with insulation. For use in IC and Non-IC conditions. Up to 1500 lumens. Housing adjusts in frame to accommodate up to 1 1/2" ceiling thickness. Airtight housing with gasket to restrict airflow in accordance with ASTM E-283 air-tight requirements.

**Installation:** Designed for ceiling plenums where 2x6 joists or taller are used. High strength hanger bars can easily be nailed to joists. Suitable for T-grid and drop ceiling applications. See installation sheet for detailed information. Emergency Battery Back-up Option requires access from above. For use with ELCO Koto™ Architectural LED Light Engines (ELK21 or ELK24 Series).

**Junction Box:** Positioned to accommodate straight conduit runs. Two 3/4" knockouts, Seven 1/2" trade size conduit knockouts, One 3/8" knockout. Four Pry-out knockout slots for easy romex installation.

**Hanger Bars:** Pre Installed hanger bars with True Nail easy installation in regular lumber, engineered lumber, and Laminated Beams. Integral T-bar slots for easy installation in T-Bars. Spans up 24" and can be repositioned 90°. Score lines allow for tool-free hanger bar size reduction. Integral leveling flange allows for single-person installation while easily aligning the housings with the joists.

**Electrical:** Driver is rated for 120V and 277V input (120/277V). High Efficiency driver with a power factor > 0.95.

**Emergency Battery Pack:** Optional 90 minute battery pack available with test indicator switch. Note that double wall housings require Access From Above Ceiling for Battery Maintenance.

**Dimmability:** 3-in-1 Dimming: Triac, ELV and 0-10V dimming in one driver. 0-10V Dimming down to 1% with a compatible dimmer. ICALWN - Lutron Athena Wireless Node. Can be specified with Lutron drivers for 0.1% and 1% dimming. For a full list of dimmers refer to the Dimmer Compatibility List.

**Listings:** cUL Listed for Damp Location and for Wet Location with select trims. cUL Listed for Direct Contact with Insulation and Combustible Material. cUL Listed for Feed Through.

## Product Numbers

Item	Description	Lamp type	Lumens	Watts	Voltage	Dimming
E3LK53ICA	Maximum Adjustability Housing	LED	1250 lm	15.7W	120V	Triac/ELV
E3LK54ICAD	Maximum Adjustability Housing	LED	1250 lm	15.7W	120/277V	0-10V/Triac/ELV (1% Dimming)
E3LK54ICAD-L	Maximum Adjustability Housing	LED	1250 lm	15.7W	120/277V	0-10V/Triac/ELV (1% Dimming)
E3LK54ICADAL	Maximum Adjustability Housing	LED	1250 lm	15.7W	120/277V	DALI 2
E3LK84ICA	High Lumen Maximum Adjustability Housing	LED	1500 lm	18.9W	120V	Triac/ELV
E3LK85ICAD	High Lumen Maximum Adjustability Housing	LED	1500 lm	18.9W	120/277V	0-10V/Triac/ELV (1% Dimming)
E3LK85ICAD-L	High Lumen Maximum Adjustability Housing	LED	1500 lm	18.9W	120/277V	0-10V/Triac/ELV (1% Dimming)
E3LK85ICADAL	High Lumen Maximum Adjustability Housing	LED	1500 lm	18.9W	120/277V	DALI 2

# Product Number Builder

Example: **E3LK53ICA**

Koto™ Architectural Housing

Voltage (Wattage)

Dimming

**E3LK**

**53** 120V (15.7W) <sup>1</sup>

**54** 120/277V (15.7W) <sup>2</sup>

**84** 120V (18.9W) <sup>1</sup>

**85** 120/277V (18.9W) <sup>2</sup>

**ICA** Triac/ELV

**ICAD** 0-10V/Triac/ELV <sup>3</sup>

**ICAD-L** 0-10V/Triac/ELV <sup>3</sup>

**ICADAL** DALI2

**ICALWN** Lutron Athena Wireless

<sup>1</sup> Available as 120V, Triac/ELV only

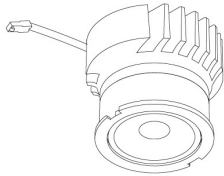
<sup>2</sup> Available as 120/277V, 0-10V/Triac/ELV only

<sup>3</sup> 1% Dimming

# Compatible Products

For use with Dedicated 3" Architectural ICA LED Housings

## Koto™ Architectural LED Light Engine



**Koto™ LED Light Engine**  
ELK21 & ELK24

PRODUCT NUMBER BUILDER			
Koto™ LED Light Engine	Lumens	Color Temperature	Beam Angle
ELK			
21	1100 - 1500 lm <sup>1</sup>	27D 2700K	(blank) 38° lens (Standard)
24	1100 - 1800 lm <sup>1</sup>	30D 3000K	-S 18° lens
		35D 3500K	-N 25° lens
		40D 4000K	-W 60° lens
			-FC 18° - 50° Adjustable (ELK21 Only)

<sup>1</sup>Wattage based on housing.

### ACCESSORIES



#### Lens

- EP731C** 18° Lens
- EP732C** 25° Lens
- EP733C** 38° Lens
- EP734C** 60° Lens

<sup>\*</sup>EP732C, EP733C, EP734C Included



#### Snoot

- L50W** White
- L50B** Black



#### Secondary Optics

- L45** Hex Louver
- L46** Linear Lens
- L47** Spread Louver
- L49** Frosted Lens
- L51** Color Shifter

## 3" Pex™ Twist-&-Lock Trims



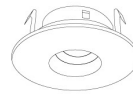
### Deep Reflector

**ELK3618**  
Finishes:  
(W, BB, BZ, B, C, H)



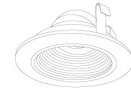
### Adjustable Gimbal

**ELK3629**  
Finishes:  
(W, BB, BZ, B, C, H)



### Adjustable Pinhole

**ELK3627**  
Finishes:  
(B, BB, BZ)



### Adjustable Baffle

**ELK3693**  
Finishes:  
(W)



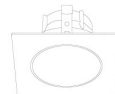
### Slot Aperture

**ELK3620**  
Finishes:  
(W)



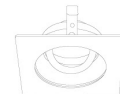
### Adj. Reflector Wall Wash

**ELK3622**  
Finishes:  
(W)



### Sq. Deep Reflector

**ELK3318**  
Finishes:  
(W, BB, BZ, B, C, H)



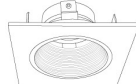
### Sq. Adjustable Gimbal

**ELK3329**  
Finishes:  
(W, BB, BZ, B, C, H)



### Sq. Adjustable Wall Wash

**ELK3322**  
Finishes:  
(W)



### Sq. Adjustable Baffle

**ELK3393**  
Finishes:  
(W)



### Sq. Adjustable Pinhole

**ELK3327**  
Finishes:  
(B, BB, BZ)

\*Finishes: **W** - All White, **BB** - All Black, **BZ** - All Bronze, **B** - Black Reflector w/White Ring, **C** - Chrome Reflector w/White Ring, **H** - Haze Reflector w/White Ring



Must be used with Maximum Adjustability Housing