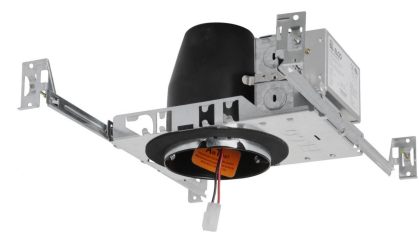


3" IC Airtight Single Wall Housing with Driver



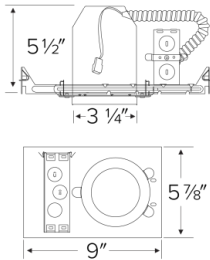
Features

- cUL Listed for direct contact with insulation.
- Optional 90 minutes, 120/277 VAC, 60Hz, Emergency Backup.
- Flicker-Free Dimming.
- USA designed and assembled.
- Limited 5 year warranty.
- For use with ELCO Cedar™ System 3" LED Light Engines.
- 2 at the end of the item number denotes Generation 2. Please note Gen 2 and Gen 1 are not cross compatible.

Specifications

Lumens	850 lm
Voltage	120V
Dimmable	Triac/ELV
Power Factor	≥0.95
Damp Location	Listed

Dimensions



Technical Details

Construction: Single wall IC rated for direct contact with insulation. For use in IC and non-IC conditions. 850 lumens. Housing adjusts in frame to accommodate up to 1 1/2" ceiling thickness. Airtight housing with gasket to restrict airflow in accordance with ASTM E-283 air-tight requirements.

Installation: Designed for ceiling plenums where 2x6 joists or taller are used. High strength hanger bars can easily be nailed to joists. Suitable for T-grid and drop ceiling applications. See installation sheet for detailed information.

Junction Box: Positioned to accommodate straight conduit runs. Two 3/4" knockouts, Seven 1/2" trade size conduit knockouts, One 3/8" knockout. Four Pry-out knockout slots for easy romex installation.

Hanger Bars: Pre Installed hanger bars with True Nail easy installation in regular lumber, engineered lumber, and Laminated Beams. Integral T-bar slots for easy installation in T-Bars. Spans up 24" and can be repositioned 90°. Score lines allow for tool-free hanger bar size reduction. Integral leveling flange allows for single-person installation while easily aligning the housings with the joists.

Electrical: Driver is rated for 120V and 277V input (120/277V). High Efficiency driver with a power factor > 0.95.

Dimmability: 3 in 1 dimming: Triac, ELV and 0-10V dimming in one driver. 0-10V dimming down to 5% with a compatible dimmer. Can be specified with Lutron drivers for 0.1% and 1% dimming. For a full list of dimmers refer to the Dimmer Compatibility List.

Listings: cUL Listed for Damp Location and for Wet Location with select trims. cUL Listed for Direct Contact with Insulation and Combustible Material. cUL Listed for Feed Through.

Product Number

Item	Lumens	Voltage	Dimming
E3LC08ICA2	850 lm	120V	Triac/ELV

Product Number Builder

Example: E3LC08ICA2

ELCO Cedar 3" Housing	Lumens	IC Airtight	Dimming	Generation	Option
E3LC	08 850 lm	ICA ICA	120V Triac/ELV D 120/277V Triac/ELV/0-10V SD Sunset L Lutron	2 Gen 2 Gen 1	No EM EM1 Emer. Backup up to 700 lm EM2 Emer. Backup up to 1100lm

Compatible Products

For use with 3" Cedar™ IC LED housings



3" Cedar™ LED Light Engines



Round Reflector Trim

E310C

Finishes:

(W, B, BB, BZ, C, H)



Round Baffle Trim

E314C

Finishes:

(W, B, BB, BZ)



Square Pinhole Trim

E315C

Finishes:

(W, B, C)



Square Reflector Trim

E320C

Finishes:

(W, BB, BZ, C)



Round Pinhole Trim

E329C

Finishes:

(W, B, C)

PRODUCT NUMBER BUILDER

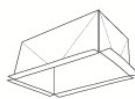
3" Cedar™ Trim	Style	Lumen	Color Temperature	Finish
E3				
	10C Round Reflector	08 850 lm	27 2700K	W All White
	14C Round Baffle		30 3000K	B Black w/White Ring
	15C Square Pinhole		35 3500K	BB All Black
	20C Square Reflector		40 4000K	BZ All Bronze
	29C Pinhole Trim		50 5000K	C Chrome w/White Ring
			SD Sunset Dimming	H Haze w/White Ring

3" Accessories



Fire Cover

CAT NO.	SPECIFICATIONS
FIRECVR	9 3/4" H x 17" O.D.



Fire Enclosure

CAT NO.	SPECIFICATIONS
FIREENCL	20 3/8" L x 14 3/8" W
FIREENCL-S	Shallow, 16" L x 14 3/8" W



Mica Fire Tape

CAT NO.	SPECIFICATIONS
FIRETAPE	3/4" W x 16' L