

# 3" IC Airtight Remodel Housing for Koto™ Architectural LED Light Engine



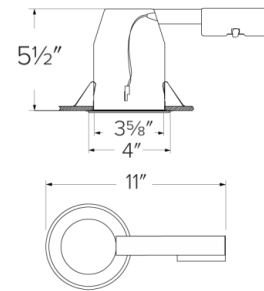
## Features

- IC Airtight for direct contact with insulation.
- Koto™ Architectural Housing: 120V Triac/ELV.
- Must be used with Architectural Koto™ LED Light Engines (ELK19, ELK21, or ELK24 Series).
- Lumen output based on module.

## Specifications

<b>Wattage</b>	10.5W
<b>Lumens</b>	750 (ELK19) - 950 (ELK21) - 1100 (ELK24) lm
<b>Voltage</b>	120V
<b>Dimmable</b>	Triac/ELV

## Dimensions



## Technical Details

**Lamp:** Designed for use with ELCO Architectural Koto™ LED Light Engines (ELK19, ELK21, or ELK24 Series).

### Construction:

- Single Wall IC Rated for direct contact with insulation, for use in IC or non-IC conditions.
- Housing accommodates up to 1 1/2" ceiling thickness.
- Airtight housing with gasket to restrict airflow in accordance with ASTM E-283 air-tight requirements.

**Installation:** Designed for ceiling plenums where 2x6 joists or taller joists are used. Maximum hole cutout is 3 5/8". See installation sheet for detailed information.

**Junction Box:** Positioned to accommodate straight conduit runs. Seven 1/2" trade size conduit knockouts, four 3/4" knockouts. Pry-out knockout slots. 4 Romex pryouts with strain relief.

### Electrical:

- Input Voltage: 120V.
- High efficiency driver with power factor >0.9

### Dimmability:

- Triac/ELV

### Listings:

- cUL Listed for Damp Location.
- cUL Listed for Wet Location with select trims.
- cUL Listed for Feed Through.
- cUL Listed for Direct Contact with Insulation and Combustible Material.
- Airtight per ASTM E-283.
- Install a JA8-2016-E lamp/luminaire for Title 24 Compliance.

**Warranty:** ELCO Lighting warrants products will be free from defects in materials and workmanship for a period of 5 years.

## Product Number

Item	Description	Lumens	Watts	Voltage	Dimming
<b>E3LK65RICA</b>	Remodel	750 (ELK19) - 950 (ELK21) - 1100 (ELK24) lm	10.5W	120V	Triac/ELV

# Product Number Builder

Example: **E3LK65RICA**

3" Koto™ Standard ICA Remodel Housing

Voltage

Dimming

**E3LK**

**65** 120V <sup>1</sup>

**66** 120/277V <sup>2</sup>

**RICA** Triac/ELV

**RICAD** 0-10V/Triac/ELV

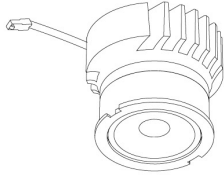
<sup>1</sup> Available as 120V, Triac/ELV only

<sup>2</sup> Available as 120/277V, 0-10V/Triac/ELV only

# Compatible Products

For use with Dedicated 3" Architectural ICA LED Housings

## Koto™ Architectural LED Light Engine



**Koto™ LED Light Engine**  
ELK19, ELK21 & ELK24

PRODUCT NUMBER BUILDER			
Koto™ LED Light Engine	Lumens	Color Temperature	Beam Angle
ELK			
19	750 - 850 lm*	27D 2700K	(blank) 38° lens (Standard)
21	1100 - 1500 lm*	30D 3000K	-S 18° lens
24	1100 - 1800 lm*	35D 3500K	-N 25° lens
		40D 4000K	-W 60° lens
		SD Sunset Dimming (ELK19 Only)	-FC 18° - 50° Adjustable (ELK21 Only)

\*Wattage based on housing.

### ACCESSORIES



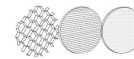
#### Lens

- EP731C 18° Lens
- EP732C 25° Lens
- EP733C 38° Lens
- EP734C 60° Lens

\*EP732C, EP733C, EP734C Included

#### Reflectors

- EP735C 15°
- EP736C 25°
- EP737C 38°
- EP738C 60°



#### Secondary Optics

- L45 Hex Louver
- L46 Linear Lens
- L47 Spread Louver
- L49 Frosted Lens
- L50 Color Shifter

## 3" Pex™ Twist-&-Lock Trims



**Deep Reflector**

**ELK3618**

Finishes:  
(W, BB, BZ, B, C, H)



**Adjustable Gimbal**

**ELK3629**

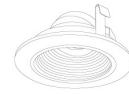
Finishes:  
(W, BB, BZ, B, C, H)



**Adjustable Pinhole**

**ELK3627**

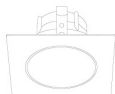
Finishes:  
(B, BB, BZ)



**Adjustable Baffle**

**ELK3693**

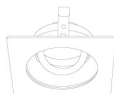
Finishes:  
(W)



**Sq. Deep Reflector**

**ELK3318**

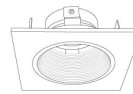
Finishes:  
(W, BB, BZ, B, C, H)



**Sq. Adjustable Gimbal**

**ELK3329**

Finishes:  
(W, BB, BZ, B, C, H)



**Sq. Adjustable Baffle**

**ELK3393**

Finishes:  
(W)



**Sq. Adjustable Pinhole**

**ELK3327**

Finishes:  
(B, BB, BZ)

\*Finishes: **W** - All White, **BB** - All Black, **BZ** - All Bronze, **B** - Black Reflector w/White Ring, **C** - Chrome Reflector w/White Ring, **H** - Haze Reflector w/White Ring