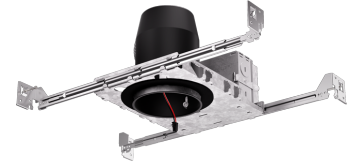


# 3" IC Airtight New Construction Housing for Architectural Koto™ LED Engine



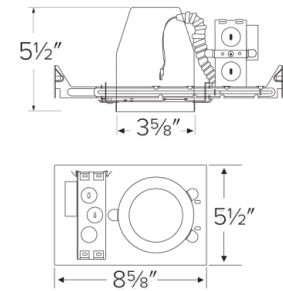
## Features

- IC Airtight for direct contact with insulation.
- Koto™ Architectural Housing: 120/277V 0-10V/Triac/ELV or 120V Triac/ELV with optional Emergency Battery Backup.
- Must be used with Architectural Koto™ LED Light Engines (ELK19, ELK21, or ELK24 Series).
- Lumen output based on module

## Specifications

<b>Wattage</b>	12.5W
<b>Lumens</b>	750 (ELK19) - 950 (ELK21) - 1100 (ELK24) lm
<b>Voltage</b>	120/277V
<b>Dimmable</b>	0-10V/Triac/ELV

## Dimensions



## Technical Details

**Lamp:** Designed for use with ELCO Architectural Koto™ LED Light Engines (ELK19, ELK21, or ELK24 Series).

**Construction:** Single wall IC rated for direct contact with insulation, for use in IC or non-IC conditions. Housing adjusts in frame to accommodate up to 1 1/2" ceiling thickness. Airtight housing with gasket to restrict airflow in accordance with ASTM E-283 air-tight requirements.

**Installation:** Designed for ceiling plenums where 2x6 joists or taller joists are used. High strength hanger bars can easily be nailed to joists. Maximum hole cutout is 3 5/8". Suitable for t-grid and drop ceiling applications. See installation sheet for detailed information.

**Junction Box:** Positioned to accommodate straight conduit runs. Seven 1/2" trade size conduit knockouts, four 3/4" knockouts. Pry-out knockout slots. 4 Romex pryouts with strain relief.

**Hanger Bars:** Pre-installed hanger bars with True Nail facilitate easy installation in regular lumber, engineered lumber, and laminated beams. Integral T-bar slots for easy installation in T-bars. Spans up to 24" and can be repositioned 90°. Score lines allow for tool-free hanger bar size reduction. Integral leveling flange allows for single-person installation while aligning the housings with the joists.

**Electrical:** Input Voltage: 120V or 120/277V. **Dimmability:** Triac/ELV or 0-10V/Triac/ELV

**Listings:** cUL Listed for Damp Location. cUL Listed for Wet Location with select trims. cUL Listed for Feed Through. cUL Listed for Direct Contact with Insulation and Combustible Material. Airtight per ASTM E-283. Install a JA8-2016-E lamp/luminaire for Title 24 Compliance.

**Warranty:** ELCO Lighting warrants products will be free from defects in materials and workmanship for a period of 5 years.

## Product Number

Item	Description	Lumens	Watts	Voltage	Dimming
E3LK66ICAD	New Construction	750 (ELK19) - 950 (ELK21) - 1100 (ELK24) lm	12.5W	120/277V	0-10V/Triac/ELV

# Product Number Builder

Example: **E3LK65ICA**

3" Koto™ Standard ICA Housing

Voltage

Dimming

**E3LK**

**65** 120V<sup>1</sup>  
**66** 120/277V<sup>2</sup>

**ICA** Triac/ELV  
**ICAD** 0-10V/Triac/ELV

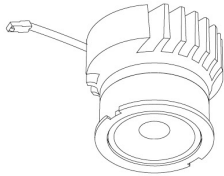
<sup>1</sup> Available as 120V, Triac/ELV only

<sup>2</sup> Available as 120/277V, 0-10V/Triac/ELV only

# Compatible Products

For use with Dedicated 3" Architectural ICA LED Housings

## Koto™ Architectural LED Light Engine



**Koto™ LED Light Engine**  
ELK19, ELK21 & ELK24

PRODUCT NUMBER BUILDER			
Koto™ LED Light Engine	Lumens	Color Temperature	Beam Angle
ELK			
19	750 - 850 lm*	27D 2700K	(blank) 38° lens (Standard)
21	1100 - 1500 lm*	30D 3000K	-S 18° lens
24	1100 - 1800 lm*	35D 3500K	-N 25° lens
		40D 4000K	-W 60° lens
		SD Sunset Dimming (ELK19 Only)	-FC 18° - 50° Adjustable (ELK21 Only)

\*Wattage based on housing.

### ACCESSORIES



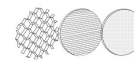
#### Lens

- EP731C 18° Lens
- EP732C 25° Lens
- EP733C 38° Lens
- EP734C 60° Lens

\*EP732C, EP733C, EP734C Included

#### Reflectors

- EP735C 15°
- EP736C 25°
- EP737C 38°
- EP738C 60°



#### Secondary Optics

- L45 Hex Louver
- L46 Linear Lens
- L47 Spread Louver
- L49 Frosted Lens
- L50 Color Shifter

## 3" Pex™ Twist-&-Lock Trims



**Deep Reflector**

**ELK3618**

Finishes:  
(W, BB, BZ, B, C, H)



**Adjustable Gimbal**

**ELK3629**

Finishes:  
(W, BB, BZ, B, C, H)



**Adjustable Pinhole**

**ELK3627**

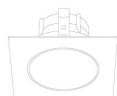
Finishes:  
(B, BB, BZ)



**Adjustable Baffle**

**ELK3693**

Finishes:  
(W)



**Sq. Deep Reflector**

**ELK3318**

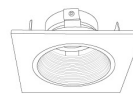
Finishes:  
(W, BB, BZ, B, C, H)



**Sq. Adjustable Gimbal**

**ELK3329**

Finishes:  
(W, BB, BZ, B, C, H)



**Sq. Adjustable Baffle**

**ELK3393**

Finishes:  
(W)



**Sq. Adjustable Pinhole**

**ELK3327**

Finishes:  
(B, BB, BZ)

\*Finishes: **W** - All White, **BB** - All Black, **BZ** - All Bronze, **B** - Black Reflector w/White Ring, **C** - Chrome Reflector w/White Ring, **H** - Haze Reflector w/White Ring