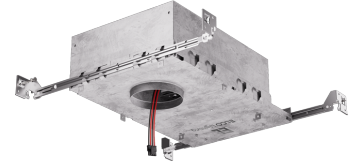


2" Tunable White Koto™ IC Airtight Housing

120/277V AC/50-60Hz. Must be used with Tunable White Koto™ LED Light Engines (ELK19TWD Series).



Features

- IC Airtight for direct contact with insulation.
- 120/277V AC/50-60Hz universal input voltage
- Smooth, flicker-free dimming and CCT tuning
- Dimmable to 0.1%, dim to dark
- E21KT10 (1000 lm, 14W) 4" Height
- E21KT12 (1250 lm, 18.3W) 5½" Height
- Damp location rated and wet location rated for wet location trims

Specifications

Wattage	18.3W
Lumens	1250 lm
Voltage	120/277V AC
Dimmable	0-10V
Lamp Type	LED
Wet Location	Rated for wet location trims
Damp Location	Rated

Technical Details

Construction: Double Wall IC Rated for direct contact with insulation. For use in IC and Non-IC conditions. Up to 1100 lumens. Housing adjusts in the frame to accommodate up to 1 1/2" ceiling thickness. Airtight housing with gasket to restrict airflow in accordance with ASTM E-283 air-tight requirements.

Installation: Designed for ceiling plenums where 2x6 joists or taller are used. High-strength hanger bars can easily be nailed to joists. Suitable for T-grid and drop ceiling applications. See the installation sheet for detailed information. For use with ELCO Tunable White Koto™ LED Light Engines (ELK19TWD Series)

Junction Box: Positioned to accommodate straight conduit runs. Two 3/4" knockouts, Seven 1/2" trade size conduit knockouts, and One 3/8" knockout. Four Pry-out knockout slots for easy Romex installation.

Hanger Bars: Pre Installed hanger bars with True Nail easy installation in regular lumber, engineered lumber, and Laminated Beams. Integral T-bar slots for easy installation in T-Bars. Spans up to 24" and can be repositioned 90°. Score lines allow for tool-free hanger bar size reduction. Integral leveling flange allows for single-person installation while easily aligning the housings with the joists.

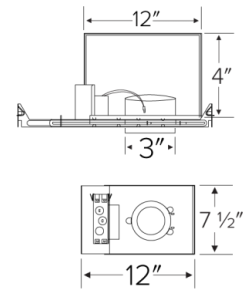
Electrical: Driver is rated for 120V and 277V input (120/277V). High-Efficiency driver with a power factor > 0.95.

Driver Options:

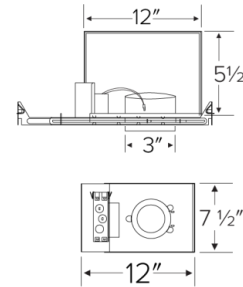
- **Standard:** Integrated dual-channel 0-10V Dimming, no control module required. Not compatible with control module ETW3 Series.

Dimmability: 0-10V dimming in one driver. 0-10V dimming down to 5% with a compatible dimmer. Can be specified with Lutron drivers for 0.1% and 1% dimming. For a full list of dimmers refer to the Dimmer Compatibility List.

E21KT10ICA Dimensions



E21KT12ICA Dimensions



Product Number

Item	Description	Lamp type	Lumens	Watts	Voltage	Dimming
E21KT12ICAD	IC Airtight Housing	LED	1250 lm	18.3W	120/277V AC	0-10V

Product Number Builder Example: E21KT10ICAD

2" Tunable White Koto™ Shallow IC Airtight Housing

Lumens

IC Rated

Driver

E21KT

10 1000 (14W)
12 1250 (18.3)

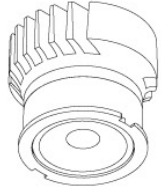
ICA IC Airtight Housing

D Standard

Compatible Products

For use with Dedicated 2" Tunable White Koto™ IC LED Housings

Koto™ LED Module



**Tunable White
Koto™ LED Module
ELK19**

PRODUCT NUMBER BUILDER		
Koto™ LED Module	Color Temperature	Beam Angle
ELK19		
TWD	2700K - 5000K	(blank) 38° lens (Standard)
T41D	1800K - 4000K	-S 18° lens
T62D	2700K - 6500K	-N 25° lens
		-W 60° lens

ACCESSORIES



Lens

- EP731C** 18° Lens
- EP732C** 25° Lens
- EP733C** 38° Lens
- EP734C** 60° Lens

EP732C, EP733C, EP734C Included



Snoot

- L50W** White
- L50B** Black



Secondary Optics

- L45** Hex Louver
- L46** Linear Lens
- L47** Spread Louver
- L49** Frosted Lens
- L51** Color Shifter

2" Pex™ Twist-On Trims



Round Deep Reflector

ELK2818

Finishes: (W, B, H, BB, BZ)



Round Adjustable Reflector

ELK2829

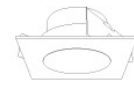
Finishes: (W, B, H, BB, BZ)



Round Adjustable Pinhole

ELK2827

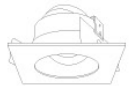
Finishes: (W, B, BB, BZ)



Square Deep Reflector

ELK2518

Finishes: (W, B, BB)



Square Adjustable Reflector

ELK2529

Finishes: (W, B, BB)



Square Reflector

ELK2541

Finishes: (W, B, BB)



Square Adjustable Pinhole

ELK2527

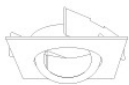
Finishes: (W, B, BB)



Round Gimbal

ELK2888

Finishes: (W, B, BZ)



Square Gimbal

ELK2588

Finishes: (W, BZ)

Compatible Products

For use with Dedicated 2" Tunable White Koto™ IC LED Housings

2" Accessories



Emergency Battery Backup



Fire Cover



Fire Enclosure



Mica Fire Tape

CAT NO.	SPECIFICATIONS
KEM-LD5	8W, 120/277V

* Requires access from above

CAT NO.	SPECIFICATIONS
FIRECVR	9 3/4" H x 17" O.D.

CAT NO.	SPECIFICATIONS
FIREENCL	20 3/8" L x 14 3/8" W

FIREENCL-S Shallow,
16" L x 14 3/8" W

CAT NO.	SPECIFICATIONS
FIRETAPE	3/4" W x 16' L