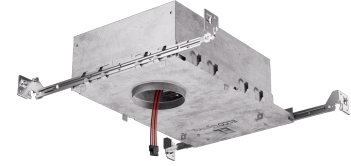


# 2" Tunable White Koto™ IC Airtight Housing

120/277V AC/50-60Hz. Must be used with Tunable White Koto™ LED Light Engines (ELK19TWD Series).



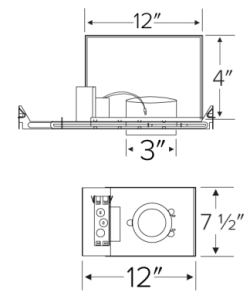
## Features

- IC Airtight for direct contact with insulation.
- 120/277V AC/50-60Hz universal input voltage
- Smooth, flicker-free dimming and CCT tuning
- Dimmable to 0.1%, dim to dark
- E21KT10 (1000 lm, 14W) 4" Height
- E21KT12 (1250 lm, 18.3W) 5½" Height
- Damp location rated and wet location rated for wet location trims
- Optional Accessory: [2" Koto™ Housing Ceiling Extension Collar](#)

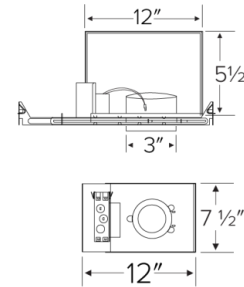
## Specifications

<b>Wattage</b>	14W
<b>Lumens</b>	1000 lm
<b>Voltage</b>	120/277V AC
<b>Dimmable</b>	0-10V
<b>Lamp Type</b>	LED
<b>Wet Location</b>	Rated for wet location trims
<b>Damp Location</b>	Rated

## E21KT10ICA Dimensions



## E21KT12ICA Dimensions



## Technical Details

**Construction:** Double Wall IC Rated for direct contact with insulation. For use in IC and Non-IC conditions. Up to 1100 lumens. Housing adjusts in the frame to accommodate up to 1 1/2" ceiling thickness. Airtight housing with gasket to restrict airflow in accordance with ASTM E-283 air-tight requirements.

**Installation:** Designed for ceiling plenums where 2x6 joists or taller are used. High-strength hanger bars can easily be nailed to joists. Suitable for T-grid and drop ceiling applications. See the installation sheet for detailed information. For use with ELCO Tunable White Koto™ LED Light Engines (ELK19TWD Series)

**Junction Box:** Positioned to accommodate straight conduit runs. Two 3/4" knockouts, Seven 1/2" trade size conduit knockouts, and One 3/8" knockout. Four Pry-out knockout slots for easy Romex installation.

**Hanger Bars:** Pre Installed hanger bars with True Nail easy installation in regular lumber, engineered lumber, and Laminated Beams. Integral T-bar slots for easy installation in T-Bars. Spans up to 24" and can be repositioned 90°. Score lines allow for tool-free hanger bar size reduction. Integral leveling flange allows for single-person installation while easily aligning the housings with the joists.

**Electrical:** Driver is rated for 120V and 277V input (120/277V). High-Efficiency driver with a power factor > 0.95.

### Driver Options:

- **Standard:** Integrated dual-channel 0-10V Dimming, no control module required. Not compatible with control module ETW3 Series.

**Dimmability:** 0-10V dimming in one driver. 0-10V dimming down to 5% with a compatible dimmer. Can be specified with Lutron drivers for 0.1% and 1% dimming. For a full list of dimmers refer to the Dimmer Compatibility List.

## Product Number

Item	Description	Lamp type	Lumens	Watts	Voltage	Dimming
E21KT10ICAD	IC Airtight Housing	LED	1000 lm	14W	120/277V AC	0-10V

## Product Number Builder Example: E21KT10ICAD

2" Tunable White Koto™ Shallow IC Airtight Housing

Lumens

IC Rated

Driver



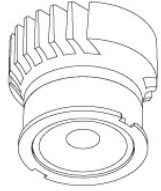


10 1000 (14W)  
12 1250 (18.3)

# Compatible Products

For use with Dedicated 2" Tunable White Koto™ IC LED Housings

## Koto™ LED Module



**Tunable White  
Koto™ LED Module  
ELK19**

PRODUCT NUMBER BUILDER		
Koto™ LED Module	Color Temperature	Beam Angle
<b>ELK19</b>		
<b>TWD</b>	2700K - 5000K	<b>(blank)</b> 38° lens (Standard)
<b>T41D</b>	1800K - 4000K	<b>-S</b> 18° lens
<b>T62D</b>	2700K - 6500K	<b>-N</b> 25° lens
		<b>-W</b> 60° lens

### ACCESSORIES



#### Lens

- EP731C** 18° Lens
- EP732C** 25° Lens
- EP733C** 38° Lens
- EP734C** 60° Lens

*EP732C, EP733C, EP734C Included*



#### Snoot

- L50W** White
- L50B** Black



#### Secondary Optics

- L45** Hex Louver
- L46** Linear Lens
- L47** Spread Louver
- L49** Frosted Lens
- L51** Color Shifter

## 2" Pex™ Twist-On Trims



**Round Deep Reflector**

**ELK2818**

Finishes: (W, B, H, BB, BZ)



**Round Adjustable Reflector**

**ELK2829**

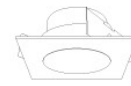
Finishes: (W, B, H, BB, BZ)



**Round Adjustable Pinhole**

**ELK2827**

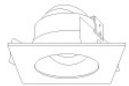
Finishes: (W, B, BB, BZ)



**Square Deep Reflector**

**ELK2518**

Finishes: (W, B, BB)



**Square Adjustable Reflector**

**ELK2529**

Finishes: (W, B, BB)



**Square Reflector**

**ELK2541**

Finishes: (W, B, BB)



**Square Adjustable Pinhole**

**ELK2527**

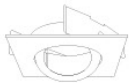
Finishes: (W, B, BB)



**Round Gimbal**

**ELK2888**

Finishes: (W, B, BZ)



**Square Gimbal**

**ELK2588**

Finishes: (W, BZ)

# Compatible Products

For use with Dedicated 2" Tunable White Koto™ IC LED Housings

## 2" Accessories

---



**Emergency Battery Backup**

CAT NO.	SPECIFICATIONS
KEM-LD5	8W, 120/277V

\* Requires access from above



**Fire Cover**

CAT NO.	SPECIFICATIONS
FIRECVR	9 3/4" H x 17" O.D.



**Fire Enclosure**

CAT NO.	SPECIFICATIONS
FIREENCL	20 3/8" L x 14 3/8" W
FIREENCL-S	Shallow, 16" L x 14 3/8" W



**Mica Fire Tape**

CAT NO.	SPECIFICATIONS
FIRETAPE	3/4" W x 16' L