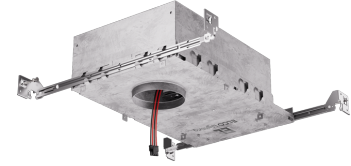


2" Tunable White Koto™ IC Airtight Housing

120/277V AC/50-60Hz. Must be used with Tunable White Koto™ LED Light Engines (ELK19TWD Series).



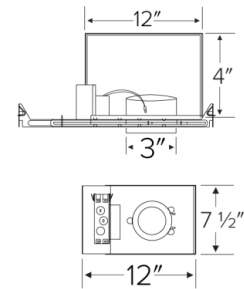
Features

- IC Airtight for direct contact with insulation.
- 120/277V AC/50-60Hz universal input voltage
- Smooth, flicker-free dimming and CCT tuning
- Dimmable to 0.1%, dim to dark
- E21KT10 (1000 lm, 14W) 4" Height
- E21KT12 (1250 lm, 18.3W) 5½" Height
- Damp location rated and wet location rated for wet location trims

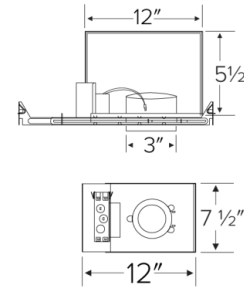
Specifications

| | |
|----------------------|------------------------------|
| Wattage | 14W - 18.3W |
| Lumens | 1000 lm - 1250 lm |
| Voltage | 120/277V AC |
| Dimmable | 0-10V |
| Lamp Type | LED |
| Wet Location | Rated for wet location trims |
| Damp Location | Rated |

E21KT10ICA Dimensions



E21KT12ICA Dimensions



Technical Details

Construction: Double Wall IC Rated for direct contact with insulation. For use in IC and Non-IC conditions. Up to 1100 lumens. Housing adjusts in the frame to accommodate up to 1 1/2" ceiling thickness. Airtight housing with gasket to restrict airflow in accordance with ASTM E-283 air-tight requirements.

Installation: Designed for ceiling plenums where 2x6 joists or taller are used. High-strength hanger bars can easily be nailed to joists. Suitable for T-grid and drop ceiling applications. See the installation sheet for detailed information. For use with ELCO Tunable White Koto™ LED Light Engines (ELK19TWD Series)

Junction Box: Positioned to accommodate straight conduit runs. Two 3/4" knockouts, Seven 1/2" trade size conduit knockouts, and One 3/8" knockout. Four Pry-out knockout slots for easy Romex installation.

Hanger Bars: Pre Installed hanger bars with True Nail easy installation in regular lumber, engineered lumber, and Laminated Beams. Integral T-bar slots for easy installation in T-Bars. Spans up to 24" and can be repositioned 90°. Score lines allow for tool-free hanger bar size repositioning. Integral leveling flange allows for single-person installation while easily aligning the housings with the joists.

Electrical: Driver is rated for 120V and 277V input (120/277V). High-Efficiency driver with a power factor > 0.95.

Driver Options:

- **Standard:** Integrated dual-channel 0-10V Dimming, no control module required. Not compatible with control module ETW3 Series.

Dimmability: 0-10V dimming in one driver. 0-10V dimming down to 5% with a compatible dimmer. Can be specified with Lutron drivers for 0.1% and 1% dimming. For a full list of dimmers refer to the Dimmer Compatibility List.

Product Numbers

| Item | Description | Lamp type | Lumens | Watts | Voltage | Dimming |
|--------------------|---------------------|-----------|---------|-------|-------------|---------|
| E21KT10ICAD | IC Airtight Housing | LED | 1000 lm | 14W | 120/277V AC | 0-10V |
| E21KT12ICAD | IC Airtight Housing | LED | 1250 lm | 18.3W | 120/277V AC | 0-10V |

Product Number Builder Example: E21KT10ICAD

2" Tunable White Koto™ Shallow IC Airtight Housing

Lumens

IC Rated

Driver

E21KT

10 1000 (14W)

ICA IC Airtight Housing

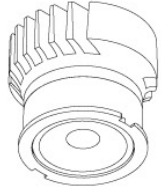
D Standard

12 1250 (18.3)

Compatible Products

For use with Dedicated 2" Tunable White Koto™ IC LED Housings

Koto™ LED Module



**Tunable White
Koto™ LED Module
ELK19**

| PRODUCT NUMBER BUILDER | | |
|------------------------|-------------------|------------------------------------|
| Koto™ LED Module | Color Temperature | Beam Angle |
| ELK19 | | |
| TWD | 2700K - 5000K | (blank) 38° lens (Standard) |
| T41D | 1800K - 4000K | -S 18° lens |
| T62D | 2700K - 6500K | -N 25° lens |
| | | -W 60° lens |

ACCESSORIES



Lens

- EP731C** 18° Lens
- EP732C** 25° Lens
- EP733C** 38° Lens
- EP734C** 60° Lens

EP732C, EP733C, EP734C Included



Snoot

- L50W** White
- L50B** Black



Secondary Optics

- L45** Hex Louver
- L46** Linear Lens
- L47** Spread Louver
- L49** Frosted Lens
- L51** Color Shifter

2" Pex™ Twist-On Trims



Round Deep Reflector

ELK2818

Finishes: (W, B, H, BB, BZ)



Round Adjustable Reflector

ELK2829

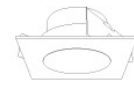
Finishes: (W, B, H, BB, BZ)



Round Adjustable Pinhole

ELK2827

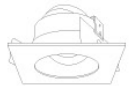
Finishes: (W, B, BB, BZ)



Square Deep Reflector

ELK2518

Finishes: (W, B, BB)



Square Adjustable Reflector

ELK2529

Finishes: (W, B, BB)



Square Reflector

ELK2541

Finishes: (W, B, BB)



Square Adjustable Pinhole

ELK2527

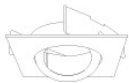
Finishes: (W, B, BB)



Round Gimbal

ELK2888

Finishes: (W, B, BZ)



Square Gimbal

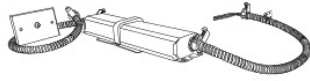
ELK2588

Finishes: (W, BZ)

Compatible Products

For use with Dedicated 2" Tunable White Koto™ IC LED Housings

2" Accessories



Emergency Battery Backup



Fire Cover



Fire Enclosure



Mica Fire Tape

| CAT NO. | SPECIFICATIONS |
|---------|----------------|
| KEM-LD5 | 8W, 120/277V |

* Requires access from above

| CAT NO. | SPECIFICATIONS |
|---------|---------------------|
| FIRECVR | 9 3/4" H x 17" O.D. |

| CAT NO. | SPECIFICATIONS |
|----------|-----------------------|
| FIREENCL | 20 3/8" L x 14 3/8" W |

FIREENCL-S Shallow,
16" L x 14 3/8" W

| CAT NO. | SPECIFICATIONS |
|----------|----------------|
| FIRETAPE | 3/4" W x 16' L |