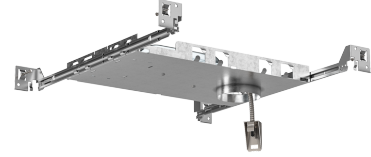


2" Teak™ ICA New Construction Frame



IC Rated frame with no bulky boxes. Easy-Pull driver included on frame. To be used with Teak™ LED Light engines only.

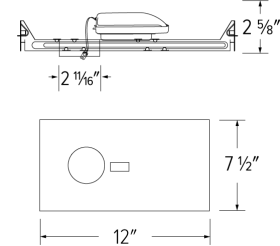
Features

- Frame to be used with Teak™ Light Engines only
- cUL Listed for direct contact with insulation
- Driver specified for 850 lumens (10.5W) or 1100 lumens (12.5W)
- Driver specified for 120V (Triac/ELV) or 120/277V (120V: 0-10V Triac/ELV, 277V 0-10V)
- Damp Location Listed, Wet Location with Wet Location Teak™ Light Engines
- JA8-2016-E, cUL, and Energy Star Qualified

Specifications

| | |
|-----------------|-----------|
| Wattage | 10.5W |
| Lumens | 850 lm |
| Voltage | 120V |
| Dimmable | Triac/ELV |

Dimensions



Technical Details

Construction: IC rated for direct contact with insulation. For use in IC and non-IC conditions.

Installation: High strength hanger bars can easily be nailed to joists. Suitable for T-grid and drop ceiling applications. See installation sheet for detailed information.

Hanger Bars: Pre Installed hanger bars with True Nail easy installation in regular lumber, engineered lumber, and Laminated Beams. Integral T-bar slots for easy installation in T-Bars. Spans up 24" and can be repositioned 90°. Score lines allow for tool-free hanger bar size reduction. Integral leveling flange allows for single-person installation while easily aligning the housings with the joists.

Electrical: Driver is rated for 120V or 120/277V input. High Efficiency driver with a power factor > 0.95.

Dimmability: Option ELV/TRIAC dimming or 3 in 1 dimming: Triac, ELV and 0-10V dimming can be specified. Can be specified with Lutron drivers. For a full list of dimmers refer to the Dimmer Compatibility List here: [TEAKDIMMERS](#).

Listings: cUL Listed. cUL Listed for Damp Location and for Wet Location with WET location Light Engines. cUL Listed for Direct Contact with Insulation and Combustible Material.

Product Number

| Item | Lumens | Watts | Voltage | Dimming |
|-----------------|--------|-------|---------|-----------|
| E2L08ICA | 850 lm | 10.5W | 120V | Triac/ELV |

Product Number Builder Example: E2L08ICA

2" IC New Construction Frame

Lumens

Dimming

E2L

08 850 lm
11 1100 lm

ICA Triac/ELV
ICAD 0-10V/Triac/ELV

Compatible Products

For use with 2" Teak™ IC Rated Housings & Frames

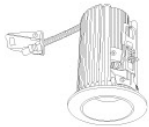
2" Teak™ Power Pack



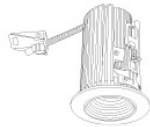
2" Teak™ Power Pack

| CAT NO. | SPECIFICATIONS |
|-----------|--|
| E2L08RIC | 10.5W, 850 lm, 120V - Triac/ELV |
| E2L11RIC | 12.5W, 1100 lm, 120V- Triac/ELV |
| E2L08RICD | 10.5W, 850 lm, 120/277V - 0-10V/Triac/ELV |
| E2L11RICD | 12.5W, 1100 lm, 120/277V - 0-10V/Triac/ELV |

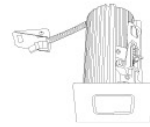
2" Teak™ LED Light Engines



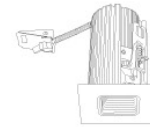
E2L10 Series
Round Reflector
Finishes:
(W, BZ, B, C, H, BB)



E2L14 Series
Round Baffle
Finishes:
(W, BZ, B, BB)



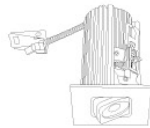
E2L13 Series
Square Reflector
Finishes:
(W, BZ, B, C, H, BB)



E2L15 Series
Square Baffle
Finishes:
(W, BZ, B, BB)



E2L18 Series
Round Adjustable
Finishes:
(W, BZ, BB)



E2L19 Series
Square Adjustable
Finishes:
(W, BZ, BB)



E2L97 Series
Pull Down
Finishes:
(W, BZ, BB)

PRODUCT NUMBER BUILDER

| Teak™ Light Engine | Style | Beam Angle | Color Temperature | Finish |
|--------------------|-----------------------------|-------------------------|-------------------|------------------------------|
| E2L | | | | |
| | 10 Round Reflector | F 38° (Standard) | 27 2700K | W All White |
| | 14 Round Baffle | NF 28° | 30 3000K | BZ All Bronze |
| | 13 Square Reflector | WF 60° | 35 3500K | B Black w/ White Ring |
| | 15 Square Baffle | | 40 4000K | C Chrome w/White Ring |
| | 18 Round Adjustable | | | H Haze w/White Ring |
| | 19 Square Adjustable | | | BB All Black |
| | 97 Pull Down | | | |



ELCO Lighting

Dimmer Compatibility Chart

120V - Triac/ELV Dimmers

For Teak™ System

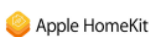
E2L08ICA, E2L11ICA, E2L08RIC, E2L11RIC

For Reference Only

Testing conducted by ELCO Lighting is not a substitute for and does not imply certification by an independent laboratory or any other standards certification. Refer to manufacturer specifications for more detailed information on product certifications and standards. Consult the dimmer manufacturer prior to installation to ensure compatibility.

| Manufacturer | Product | Part Number | Dimmed Light Output Range |
|---|---|---|---------------------------|
| Leviton | Decora SureSlide® Single Pole with Slide -to-Off | 6672 | 15% - 100% |
| | Leviton Dimmer | 1K3502 | 5% - 100% |
| Lutron | Vive, 120V, 150W LED/CFL, 600W Incandescent/Halogen, FP, Single Pole/Multi-Location Dimmer, Commercial Application | MRF2S-6CL | 12% - 91% |
| | Panel Model, Commercial/Residential Application, FP | GP (Harrier) Card | 10% - 94% |
| | Grafik QS/Mailbox Power Module, 120/220 to 240V AC, LED/Incandescent/Halogen Load Type, Commercial/Residential Indoor Application, FP | LQRJ-WPM-6P | 10% - 95% |
| | Grafik Eye 3000/HomeWorks, 120V, Incandescent/Fluorescent Load Type, Commercial/Residential Application, FP | HWI-WPM-6D-120 | 10% - 95% |
| | Panel Dimming Module, 120V, Commercial/Residential Application, FP | HW/LP-RPM-4U-120 | 10% - 95% |
| | Panel Adaptive Dimming Module, 120V, Commercial/Residential Application, FP | HW/LP-RPM-4A-120 | 9% - 95% |
| | HomeWorks® QS for CFL/LED loads, 120V, RP, Commercial/Residential Application | LQSE-4A1-D/MQSE-4A1-D/ MQSE-3A1/MQSE-2A1-D | 8% - 95% |
| | Energi Savr Node LED+ Phase Adaptive, Commercial Application, Reverse Phase, (Zone 1) (Zones 2-4) | QSN-4A5-S | 8% - 95% |
| | Energi Savr Node LED+ Phase Adaptive, Commercial Application, Foward Phase, (Zone 1) (Zones 2-4) | QSN-4A5-S | 10% - 97% |
| | RadioRA®2, 120V, 50/60-Hz, 150W LED or 600W Incandescent/Halogen, 3-Way & 4-Way, Residential Application | RRD-6CL | 10% - 95% |
| | RadioRA®3, 120V, 250W LED/CFL or 500W Incandescent/Halogen, Single Pole, Multi-Location | RRST-PRO-N | 10% - 95% |
| | HomeWorks® QS, 120V, 60-Hz, 150W LED/CFL or 600W Incandescent/Halogen/MLV, Residential Application | HQRD-6CL(H2) HQRA-6CL(H2) | 10% - 95% |
| | Homeworks QS, Residential Application, Reverse Phase | LQSE-4A-120-D | 8% - 89% |
| | HomeWorks® for LED/Incandescent/Halogen loads, Reverse Phase, (Zone 1) (Zones 2-4) | LQSE-4A5-120-D | 8% - 89% |
| | HomeWorks® for LED/Incandescent/Halogen loads, Foward Phase, (Zone 1) (Zones 2-4) | LQSE-4A5-120-D | 10% - 100% |
| | Ariadni® C-L Single Pole/3-Way, 150W LED/CFL or 600W Incandescent/Halogen | AYCL-153P | 10% - 100% |
| | Skylark Contour® C-L, Single Pole/3-Way, 150W LED/CFL or 600W Incandescent/Halogen | CTCL-153P | 10% - 100% |
| Skylark® C-L Single Pole/3-Way, 150W LED/CFL or 600W Incandescent/Halogen | SCL-153P | 10% - 100% | |

Integrating our lighting with your Smart Home System is a breeze. Simply check your Smart Home system for compatible smart switches and cross reference that with our Dimming Compatibility Chart. Once the switches are integrated with your Smart Home system your lights will be ready to go.



2042 E. Vernon Ave. Vernon CA 90058 Tel 323.231.2600 Fax 323.231.3200 elcolighting.com

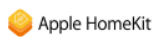
RV 06.24

| Manufacturer | Product | Part Number | Dimmed Light Output Range |
|--------------|--|-------------|---------------------------|
| Lutron | Diva® Series 150W Single Pole/3-Way Dimmer | DVCL-153P | 10% - 100% |
| | Skylark Contour® Single Pole/3-Way 1000W Incandescent/Halogen | CT-103P | 10% - 100% |
| | Skylark® Single Pole 300W ELV Preset Dimmer | SELV-300P | 5% - 100% |
| | Skylark® Single Pole 600W Incandescent/Halogen, Slide-to-Off Dimmer | S-600P | 5% - 100% |
| | Diva® 300W Single Pole/3-Way ELV Dimmer | DVELV-303P | 10% - 100% |
| | Diva® 600W Single Pole Incandescent/Halogen Preset Dimmer | DV-600P | 5% - 100% |
| | Ariadni® 600W Single Pole Magnetic Low Voltage Dimmer | AYLV-600P | 5% - 100% |
| | Ariadni® 600W Single Pole/3-Way Incandescent/Halogen Dimmer | AY-603P | 5% - 100% |
| | Maestro® 600W Single Pole/3-Way ELV Dimmer | MAELV-600 | 5% - 100% |
| | Maestro® C-L Single Pole/3-Way Dimmer. 150W Max for LED/CFL or 600W Max for Incandescent/Halogen | MACL-153M | 10% - 100% |
| | Caséta® Wireless Dimmer | PD-6WCL | 10% - 100% |

***NOTE: Refer to dimmer manufacturer's documentation for installation instructions and circuit details**

Disclaimer: Minimum and maximum loads for LEDs and CFLs are given in number of lamps and may vary depending on the lamp being used. Testing conducted by ELCO Lighting is not a substitute for and does not imply certification by an independent laboratory or any other standards certification. Refer to manufacturer specifications for more detailed information on product certifications and standards.

Integrating our lighting with your Smart Home System is a breeze. Simply check your Smart Home system for compatible smart switches and cross reference that with our Dimming Compatibility Chart. Once the switches are integrated with your Smart Home system your lights will be ready to go.





ELCO Lighting

Dimmer Compatibility Chart

120/277V - 0-10V/Triac/ELV Dimmers

For Teak™ System
E2L08ICAD, E2L11ICAD, E2L08RICD, E2L11RICD

For Reference Only

Testing conducted by ELCO Lighting is not a substitute for and does not imply certification by an independent laboratory or any other standards certification. Refer to manufacturer specifications for more detailed information on product certifications and standards. Consult the dimmer manufacturer prior to installation to ensure compatibility.

| Manufacturer | Product | Part Number | Dimmed Light Output Range |
|--|--|-----------------|---------------------------|
| Triac/ELV Type Dimmers - 120V Only | | | |
| Lutron | 120V AC, 150W LED/CFL or 600W Incandescent/Halogen, Single Pole, 3-Way | RRD-6CL | 1% - 100% |
| | 120V AC 60Hz, 150W LED/CFL/Incandescent/Halogen, Single Pole, 3-Way, | DVCL-153P | 1% - 100% |
| | 120V 60Hz, 150W LED/CFL or 600W Incandescent/Halogen, Single Pole, 3-Way | TGCL-153P | 1% - 100% |
| | 120V AC 60Hz, 300W Electronic Low Voltage, 3-Way, Commercial/Residential Application | DVELV-303P | 1% - 100% |
| | 120V, 600W Incandescent/Halogen, Single Pole, Residential Indoor Application | TG-600P | 1% - 100% |
| | 120V, 1000W Incandescent or 600W Magnetic Low Voltage, Single Pole, 3-Way | CT103P | 1% - 100% |
| | 120V AC 60Hz, 600W Electronic Low Voltage, Single Pole/Multi-Location, | MAELV600 | 1% - 100% |
| | 120V AC 60Hz, 500W Electronic Low Voltage, Single Pole/Multi-Location, | FAELV500 | 1% - 100% |
| | 120V AC 60Hz, 600W Incandescent/Halogen, Single Pole, Slide-to-Off Dimmer | S-600P | 1% - 100% |
| | 120V AC 60Hz, 150W LED/CFL or 600W Incandescent/Halogen, Single Pole, 3-Way | SCL-153P | 1% - 100% |
| | Caséta® Wireless Dimmer | PD-6WCL | 1% - 100% |
| | 120V AC 60Hz, Low Voltage Load Type, 150W Single Pole | DVLV-600P | 5% - 100% |
| | 120V AC, 60Hz, 600W Incandescent/Halogen, Single Pole, 3-Way, Residential and Commercial Application | DV-603P | 1% - 100% |
| | 120V AC, 50/60Hz, 150W LED/CFL, 600W Incandescent/Halogen, Single Pole, 3-Way, Indoor Application | MA-PRO | 1% - 100% |
| 120V AC 60Hz, 150W LED/CFL or 600W Incandescent/Halogen, Single Pole, 3-Way, | MACL-153M | 1% - 100% | |
| Leviton | 120V AC 60Hz, 300W Electronic Low Voltage, 400 Volt Amp, Single Pole, 3-Way, | IPE04 | 1% - 100% |
| | 120V AC 60Hz, 300W CFL or 600W Incandescent, 400 Volt Amp, Single Pole, 3-Way, | 6673-10W | 1% - 100% |
| | 120V AC, 600W Incandescent with LED Locator, Single Pole, 3-Way | VP106 | 1% - 100% |
| | 120V AC 60Hz, 500W Incandescent with LED Level Indicator, Single Pole, 3-Way | 6161 | 1% - 100% |
| | 120V AC, 150W LED/CFL or 600W Incandescent, Single Pole, 3-Way | 6674 | 1% - 100% |
| Eaton | 120V AC, 300W LED/CFL or 600W Incandescent/MLV/Halogen, Single Pole, 3-Way | TAL06P1-C1 | 1% - 100% |
| Cooper | 120V AC 60Hz, 300W LED/CFL or 600W Incandescent/Halogen, Single Pole, 3-Way | SLC03P / DAL06P | 1% - 100% |
| | 120V AC 60Hz, 300W LED/CFL or 600W Incandescent, Single Pole, 3-Way, Residential | DLC03P | 1% - 100% |
| | 120V AC 60Hz, 600W Incandescent/Halogen, Single Pole, 3-Way, | RI061-VW-K2 | 1% - 100% |
| | 120V AC 60Hz, 300W LED/CFL/ Incandescent/Halogen, Single Pole, 3-Way | AAL06A-C2 | 1% - 100% |
| Lightolier | 120V, 260W Incandescent/Halogen, Single Pole, 3-Way, | ZP260QEW | 1% - 100% |

Integrating our lighting with your Smart Home System is a breeze. Simply check your Smart Home system for compatible smart switches and cross reference that with our Dimming Compatibility Chart. Once the switches are integrated with your Smart Home system your lights will be ready to go.



| Manufacturer | Product | Part Number | Dimmed Light Output Range |
|--------------------------------------|--|-------------|---------------------------|
| 0-10V Type Dimmers - 120/277V | | | |
| Lutron | 120/277V AC, 0-10V LED/CFL Ballast, Single Pole, 3-Way | NFTV | 1% - 100% |
| | 120/277V AC, 0-10V, Single Pole, 3-Way, Commercial and Residential, Indoor Application | DVSTV | 1% - 100% |
| | 120/277V AC 50/60Hz, 0-10V LED/CFL Ballast, Single Pole, 3-Way, Indoor Application | DVTV | 1% - 100% |
| Leviton | 120/277V AC 60Hz, 0-10V LED/CFL Ballast, Single Pole, 3-Way | IP710-DL | 1% - 100% |

***NOTE: Refer to dimmer manufacturer’s documentation for installation instructions and circuit details**

Disclaimer: Minimum and maximum loads for LEDs and CFLs are given in number of lamps and may vary depending on the lamp being used. Testing conducted by ELCO Lighting is not a substitute for and does not imply certification by an independent laboratory or any other standards certification. Refer to manufacturer specifications for more detailed information on product certifications and standards.

Integrating our lighting with your Smart Home System is a breeze. Simply check your Smart Home system for compatible smart switches and cross reference that with our Dimming Compatibility Chart. Once the switches are integrated with your Smart Home system your lights will be ready to go.

