

# 2" Koto Sylo™ Wall Mount

Works with Koto™ Standard LED Module



## Features

- Modern Die-Cast aluminum wall mount fixture
- Includes Standard 38° lens, with 25° and 60° lenses. Optional: 15° and 18° lenses available
- Fits 3 1/2" and 4" Octagon and Round Junction boxes
- Sunset option dims from 3000K to 1800K
- Human Centric option dims from 4000K to 2200K
- Title 24 JA8-2022 Compliant
- Life span of 50,000 hours L70

## Specifications

|                     |            |
|---------------------|------------|
| <b>Wattage</b>      | 12.5W      |
| <b>Lumens</b>       | 1150 lm    |
| <b>Voltage</b>      | 120V       |
| <b>Color Temp.</b>  | 3000K      |
| <b>Dimmable</b>     | Triac/ELV  |
| <b>Lamp Type</b>    | LED        |
| <b>Beam Angle</b>   | 38°        |
| <b>CRI</b>          | 95         |
| <b>Wet Location</b> | cUL Listed |

## Options



All White



All Black



All Bronze

## Technical Details

**Optics:** Polycarbonate module lens diffuses light evenly throughout while reducing glare with LED technology.

**Construction:** Integrated driver and light engine with quick connect. Diecast aluminum body with heat fins allows for efficient cooling.

**Installation:** Twist-lock design for toolless trim installation, for use with Koto Sylo™ products only.

**Electrical:** Module connects to 120 power supply. High-efficiency driver with a power factor >0.9. Start time of less than 0.75 seconds.

**LED Technology:** Extremely accurate Color Rendering Index of 95+. Lumen Maintenance of 50,000 hours L70 Life based on LM80 standardized test results. Superior Thermal Management by utilizing integrated heat sink. Instant On to Full Brightness technology. No LED pixelation.

**Sunset:** Sunset color temperature is our dim-to-warm LED technology that allows the color temperature to become warmer as the product is dimmed. Our SUNSET items start at 3000K and go as low as 1800K when dimmed.

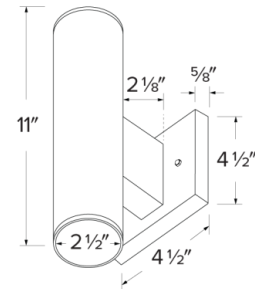
**Human Centric:** Human Centric color temperature is our dim-to-warm LED technology that allows the color temperature to become warmer as the product is dimmed. Our HUMAN CENTRIC items start at 4000K and go as low as 2200K when dimmed.

**Dimmability:** Works with 120V Triac and ELV type dimmers. Dims down to 10%. For full list of dimmers, refer to the Dimmer Compatibility List. Industry-leading dimming that dims smoothly with no hot spots or flickering.

**Listings:** cUL Listed for Wet Locations. RoHS Compliant. Meets Energy Star & California Title 24 JA8-2022 standards.

**Warranty:** ELCO Products are built to last with a 5-year Limited Warranty.

## Dimensions



**Product Number Builder** Example: **E25AW0327**

| Koto Sylo™ | Style               | Finish   | Koto™ Module (DOWN)   | Beam Angle   | Koto™ Module (UP)  | Beam Angle   | Color Temperature  | Dimming   |
|------------|---------------------|--|---|--|--|--|--|---|
| <b>E25</b> | <b>A</b> Wall Mount | <b>W</b> White<br><b>B</b> Black<br><b>BZ</b> Bronze | <b>03</b> 350 lm (5W) <sup>1,2</sup><br><b>07</b> 750 lm (10.5W)<br>825 lm<br><b>08</b> (10.5W)(CT5 Only) <sup>1,3</sup><br><b>09</b> 950 lm (10.5W)<br>1000 lm<br><b>10</b> (12.5W)(CT5 Only) <sup>1,3</sup><br><b>11</b> 1150 lm (12.5W)<br><b>13</b> 1350 lm (12.5W) | 38° lens <sup>4</sup><br><b>S</b> 18° lens<br><b>N</b> 25° lens<br><b>W</b> 60° lens<br><b>T</b> 10° lens <sup>1,5</sup> | No Module<br><b>-03</b> 350 lm <sup>1,2</sup><br><b>-07</b> 750 lm<br><b>-08</b> 825 lm <sup>1,3</sup><br><b>-09</b> 950 lm<br><b>-10</b> 1000 lm (CT5 Option Only) <sup>1,3</sup><br><b>-11</b> 1150 lm<br><b>-13</b> 1350 lm | 38° lens <sup>6</sup><br><b>S</b> 18° lens<br><b>N</b> 25° lens<br><b>W</b> 60° lens<br><b>T</b> 10° lens <sup>1,5</sup> | <b>24</b> 2400K<br><b>27</b> 2700K<br><b>30</b> 3000K<br><b>35</b> 3500K<br><b>40</b> 4000K<br><b>SD</b> Sunset (-09 and -11 only) <sup>7,8</sup><br><b>HC</b> Human Centric (-11 only) <sup>9,10</sup><br><b>C5</b> 2700K - 5000K <sup>1,11</sup> | Triac/ELV<br><b>D</b> 0-10V/Triac/ELV <sup>12</sup> |

<sup>1</sup> Available as 120V, Triac/ELV only

<sup>2</sup> Available with 2700 and 3000 Color Temperature Only

<sup>3</sup> Available with CT5 color temperature only

<sup>4</sup> Includes 28° and 60° lens in the box

<sup>5</sup> Available with 350 and 750 lumen, 2700K and 3000K options only

<sup>6</sup> Includes 25° and 60° lens in the box

<sup>7</sup> Available with -09 and -11 lumen outputs only

<sup>8</sup> Sunset, Dim to Warm technology, automatically transitions from 3000K to 1800K when dimmed

<sup>9</sup> Available with 1150 lumen (-11) outputs only

<sup>10</sup> Human Centric, Dim to Warm technology, automatically transitions from 4000K to 2200K when dimmed

<sup>11</sup> Available with -08 and -10 lumen outputs only

<sup>12</sup> Only available for 950 lumens

# Compatible Products



For use with Dedicated **Koto Sylo™** Fixtures

## Junction Boxes for Koto Sylo™ Ceiling Mount Fixtures



Junction Box with Hanger Bars  
**New Construction**

| CAT NO. | SPECIFICATIONS           |
|---------|--------------------------|
| ELJ4S   | 3 3/4" x 3 3/4" x 2 3/8" |



Junction Box without Hanger Bars  
**New Construction**

| CAT NO. | SPECIFICATIONS           |
|---------|--------------------------|
| ELJ332  | 3 3/4" x 3 3/4" x 2 3/8" |

### Accessories



**Hard Wire Adapter**

| CAT NO. | SPECIFICATIONS |
|---------|----------------|
| PSA38   | Socket Adapter |



**4" Hard Wire Adapter**

| CAT NO. | SPECIFICATIONS |
|---------|----------------|
| PSA38-4 | 4"             |

### Other Compatible Junction Boxes



3 1/2" & 4" Octagon  
**Steel Junction Boxes**

- 4" x 4" x 1 1/2"
- 4" x 4" x 2 1/8"
- 3 1/2" x 3 1/2" x 1 1/2"



4" Round Surface  
**Mount Box**

4" O.D. x 1 1/2"



3 1/2" Round Old Work  
**(Non-Metallic)**

4 1/4" O.D. x 3 1/2" I.D. x 2 5/8"



3 1/2" & 4" Round New Work  
**(Non-Metallic)**

4" O.D. x 2 3/16"  
3 1/2" O. D x 2 3/4"

## Accessories



**Emergency Battery Backup**

| CAT NO. | SPECIFICATIONS |
|---------|----------------|
| KEM-ERT | 25W, 120/277V  |

## Koto™ LED Module Accessories



**Lens**

|               |          |
|---------------|----------|
| <b>EP731C</b> | 18° Lens |
| <b>EP732C</b> | 25° Lens |
| <b>EP733C</b> | 38° Lens |
| <b>EP734C</b> | 60° Lens |

*\*EP732C, EP733C, EP734C Included*



**Reflectors**

|               |     |
|---------------|-----|
| <b>EP735C</b> | 15° |
| <b>EP736C</b> | 25° |
| <b>EP737C</b> | 38° |
| <b>EP738C</b> | 60° |



**Secondary Optics**

|            |               |
|------------|---------------|
| <b>L45</b> | Hex Louver    |
| <b>L46</b> | Linear Louver |
| <b>L47</b> | Spread Louver |
| <b>L49</b> | Frosted Lens  |
| <b>L51</b> | Color Shifter |



**Snoot**

|             |       |
|-------------|-------|
| <b>L50W</b> | White |
| <b>L50B</b> | Black |

# Photometric Report

## Koto™ LED Module

### PHOTOMETRIC REPORT

Product #: ELK0730  
 Wattage / Lumens: 10.6W / 813.8 lm  
 Luminaire LPW: 76.7 lm/W



### CANDLE POWER SUMMARY

| Degress Vertical | 0°   |
|------------------|------|
| 0                | 1186 |
| 5                | 1188 |
| 15               | 1004 |
| 25               | 536  |
| 35               | 254  |
| 45               | 93   |
| 55               | 27   |
| 65               | 12   |
| 75               | 6    |
| 85               | 3    |
| 90               | 1    |

### ILLUMINANCE AT A DISTANCE

| Distance to Target Plane | Center Beam Footcandles | Beam Diameter |
|--------------------------|-------------------------|---------------|
| 4'                       | 74.1                    | 3.2'          |
| 6'                       | 32.9                    | 4.8'          |
| 8'                       | 18.5                    | 6.4'          |
| 10'                      | 11.9                    | 8.0'          |

### ZONAL LUMEN SUMMARY

| Zone  | Lumens | %Luminaire |
|-------|--------|------------|
| 0-30° | 580.1  | 71.3       |
| 0-40° | 714.6  | 87.8       |
| 0-60° | 797.0  | 98         |
| 0-90° | 813.5  | 100        |

### PHOTOMETRIC REPORT

Product #: ELK0735  
 Wattage / Lumens: 10W / 947.4 lm  
 Luminaire LPW: 95 lm/W



### CANDLE POWER SUMMARY

| Degress Vertical | 0°   |
|------------------|------|
| 0                | 2249 |
| 5                | 2075 |
| 15               | 1257 |
| 25               | 388  |
| 35               | 72   |
| 45               | 31   |
| 55               | 21   |
| 65               | 11   |
| 75               | 5    |
| 85               | 0    |
| 90               | 0    |

### ILLUMINANCE AT A DISTANCE

| Distance to Target Plane | Center Beam Footcandles | Beam Diameter |
|--------------------------|-------------------------|---------------|
| 4'                       | 141                     | 2.6'          |
| 6'                       | 62.5                    | 3.9'          |
| 8'                       | 35.1                    | 5.2'          |
| 10'                      | 22.5                    | 6.5'          |

### ZONAL LUMEN SUMMARY

| Zone  | Lumens | %Luminaire |
|-------|--------|------------|
| 0-30° | 812.7  | 85.8       |
| 0-40° | 876.7  | 92.6       |
| 0-60° | 919.5  | 97.1       |
| 0-90° | 936.3  | 98.9       |

### PHOTOMETRIC REPORT

Product #: ELK0930  
 Wattage / Lumens: 10W / 972 lm  
 Luminaire LPW: 97 lm/W



### CANDLE POWER SUMMARY

| Degress Vertical | 0°   |
|------------------|------|
| 0                | 1455 |
| 5                | 1397 |
| 15               | 1175 |
| 25               | 655  |
| 35               | 306  |
| 45               | 116  |
| 55               | 38   |
| 65               | 16   |
| 75               | 7    |
| 85               | 2    |
| 90               | 1    |

### ILLUMINANCE AT A DISTANCE

| Distance to Target Plane | Center Beam Footcandles | Beam Diameter |
|--------------------------|-------------------------|---------------|
| 4'                       | 90.9                    | 3.1'          |
| 6'                       | 40.4                    | 4.7'          |
| 8'                       | 22.7                    | 6.3'          |
| 10'                      | 14.5                    | 7.8'          |

### ZONAL LUMEN SUMMARY

| Zone  | Lumens | %Luminaire |
|-------|--------|------------|
| 0-30° | 685.9  | 70.6       |
| 0-40° | 846.0  | 87.1       |
| 0-60° | 946.8  | 97.5       |
| 0-90° | 965.8  | 99.4       |

### PHOTOMETRIC REPORT

Product #: ELK0935  
 Wattage / Lumens: 10W / 990.8 lm  
 Luminaire LPW: 99 lm/W



### CANDLE POWER SUMMARY

| Degress Vertical | 0°   |
|------------------|------|
| 0                | 2295 |
| 5                | 2215 |
| 15               | 1501 |
| 25               | 569  |
| 35               | 104  |
| 45               | 37   |
| 55               | 25   |
| 65               | 15   |
| 75               | 9    |
| 85               | 6    |
| 90               | 6    |

### ILLUMINANCE AT A DISTANCE

| Distance to Target Plane | Center Beam Footcandles | Beam Diameter |
|--------------------------|-------------------------|---------------|
| 4'                       | 143                     | 2.6'          |
| 6'                       | 63.8                    | 3.9'          |
| 8'                       | 35.9                    | 5.2'          |
| 10'                      | 23.0                    | 6.4'          |

### ZONAL LUMEN SUMMARY

| Zone  | Lumens | %Luminaire |
|-------|--------|------------|
| 0-30° | 826.6  | 83.5       |
| 0-40° | 890.6  | 89.9       |
| 0-60° | 937.1  | 94.6       |
| 0-90° | 962    | 97.1       |



**ELCO Lighting**

# Dimmer Compatibility Chart

## Standard Koto™ LED Modules

For ELK07, ELK08CT5, ELK09, ELK10CT5,  
ELK11 & ELK13 Series

### For Reference Only

Testing conducted by ELCO Lighting is not a substitute for and does not imply certification by an independent laboratory or any other standards certification. Refer to manufacturer specifications for more detailed information on product certifications and standards. Consult the dimmer manufacturer prior to installation to ensure compatibility.

| Manufacturer  | Product   | Part Number                                   | Dimmed Light Output Range |
|---|---|---|---------------------------|
| Leviton   | Decora SureSlide® Single Pole with Slide -to-Off  | 6672  | 15% - 100%                |
|   | Leviton Dimmer  | 1K3502  | 5% - 100%                 |
| Lutron  | Vive, 120V, 150W LED/CFL, 600W Incandescent/Halogen, FP, Single Pole/Multi-Location Dimmer, Commercial Application                    | MRF2S-6CL                                     | 12% - 91%                 |
|   | Panel Model, Commercial/Residential Application, FP   | GP (Harrier) Card                             | 10% - 94%                 |
|   | Grafik QS/Mailbox Power Module, 120/220 to 240V AC, LED/Incandescent/Halogen Load Type, Commercial/Residential Indoor Application, FP | LQRJ-WPM-6P                                   | 10% - 95%                 |
|   | Grafik Eye 3000/HomeWorks, 120V, Incandescent/Fluorescent Load Type, Commercial/Residential Application, FP                           | HWI-WPM-6D-120                                | 10% - 95%                 |
|   | Panel Dimming Module, 120V, Commercial/Residential Application, FP  | HW/LP-RPM-4U-120                              | 10% - 95%                 |
|   | Panel Adaptive Dimming Module, 120V, Commercial/Residential Application, FP   | HW/LP-RPM-4A-120                              | 9% - 95%                  |
|   | HomeWorks® QS for CFL/LED loads, 120V, RP, Commercial/Residential Application   | LQSE-4A1-D/MQSE-4A1-D/<br>MQSE-3A1/MQSE-2A1-D | 8% - 95%                  |
|   | Energi Savr Node LED+ Phase Adaptive, Commercial Application, Reverse Phase, (Zone 1) (Zones 2-4)                                     | QSN-4A5-S                                     | 8% - 95%                  |
|   | Energi Savr Node LED+ Phase Adaptive, Commercial Application, Forward Phase, (Zone 1) (Zones 2-4)                                     | QSN-4A5-S                                     | 10% - 97%                 |
|   | RadioRA®2, 120V, 50/60-Hz, 150W LED or 600W Incandescent/Halogen, 3-Way & 4-Way, Residential Application                              | RRD-6CL                                       | 10% - 95%                 |
|   | RadioRA®3, 120V, 250W LED/CFL or 500W Incandescent/Halogen, Single Pole, Multi-Location   | RRST-PRO-N                                    | 10% - 95%                 |
|   | HomeWorks® QS, 120V, 60-Hz, 150W LED/CFL or 600W Incandescent/Halogen/MLV, Residential Application                                    | HQRD-6CL(H2)<br>HQRA-6CL(H2)                  | 10% - 95%                 |
|   | Homeworks QS, Residential Application, Reverse Phase  | LQSE-4A-120-D                                 | 8% - 89%                  |
|   | HomeWorks® for LED/Incandescent/Halogen loads, Reverse Phase, (Zone 1) (Zones 2-4)  | LQSE-4A5-120-D                                | 8% - 89%                  |
|   | HomeWorks® for LED/Incandescent/Halogen loads, Forward Phase, (Zone 1) (Zones 2-4)  | LQSE-4A5-120-D                                | 10% - 100%                |
|   | Ariadni® C-L Single Pole/3-Way, 150W LED/CFL or 600W Incandescent/Halogen   | AYCL-153P                                     | 10% - 100%                |
|   | Skylark Contour® C-L, Single Pole/3-Way, 150W LED/CFL or 600W Incandescent/Halogen  | CTCL-153P                                     | 10% - 100%                |
| Skylark® C-L Single Pole/3-Way, 150W LED/CFL or 600W Incandescent/Halogen | SCL-153P  | 10% - 100%                                    |                           |

Integrating our lighting with your Smart Home System is a breeze. Simply check your Smart Home system for compatible smart switches and cross reference that with our Dimming Compatibility Chart. Once the switches are integrated with your Smart Home system your lights will be ready to go.



2042 E. Vernon Ave. Vernon CA 90058 Tel 323.231.2600 Fax 323.231.3200 elcolighting.com

| Manufacturer | Product   | Part Number | Dimmed Light Output Range |
|--------------|---|-------------|---------------------------|
| Lutron       | Diva® Series 150W Single Pole/3-Way Dimmer  | DVCL-153P   | 10% - 100%                |
|              | Skylark Contour® Single Pole/3-Way 1000W Incandescent/Halogen   | CT-103P     | 10% - 100%                |
|              | Skylark® Single Pole 300W ELV Preset Dimmer   | SELV-300P   | 5% - 100%                 |
|              | Skylark® Single Pole 600W Incandescent/Halogen, Slide-to-Off Dimmer   | S-600P      | 5% - 100%                 |
|              | Diva® 300W Single Pole/3-Way ELV Dimmer   | DVELV-303P  | 10% - 100%                |
|              | Diva® 600W Single Pole Incandescent/Halogen Preset Dimmer   | DV-600P     | 5% - 100%                 |
|              | Ariadni® 600W Single Pole Magnetic Low Voltage Dimmer   | AYLV-600P   | 5% - 100%                 |
|              | Ariadni® 600W Single Pole/3-Way Incandescent/Halogen Dimmer   | AY-603P     | 5% - 100%                 |
|              | Maestro® 600W Single Pole/3-Way ELV Dimmer  | MAELV-600   | 5% - 100%                 |
|              | Maestro® C-L Single Pole/3-Way Dimmer. 150W Max for LED/CFL or 600W Max for Incandescent/Halogen  | MACL-153M   | 10% - 100%                |
|              | Caséta® Wireless Dimmer   | PD-6WCL     | 10% - 100%                |
| SnapOne™     | Control4® Centralized 8-Channel Adaptive Phase Dimmer, 120/277V AC, 50/60-Hz, 200W LED, 500W Fluorescent/CFL, 1000W Incandescent/Halogen/ELV/MLV* | C4-DIN-8APD | 5% - 100%                 |
|              | Control4® Centralized 8-Channel Forward Phase Dimmer, 100/120V AC, 50/60-Hz, 200W LED, 500W Fluorescent/CFL, 1000W Incandescent/Halogen/MLV*      | C4-DIN-8FPD | 25% - 100%                |
|              | Control4® Wireless Adaptive Phase Dimmer, 120V AC, 50/60-Hz, 120W LED, 300W Fluorescent/CFL, 600W Incandescent/Halogen                            | C4-APD120   | 23% - 100%                |
|              | Control4® Forward Phase Dimmer, 120V AC, 50/60-Hz, 200W LED, 500W Fluorescent/CFL, 1000W Incandescent/Halogen                                     | C4-FPD120   | 4% - 100%                 |
|              | Control4® Essential Forward Phase Dimmer, 120V AC, 60-Hz, 300W LED, 300W Fluorescent/CFL, 600W Incandescent/Halogen                               | C4-V-FPD120 | 1% - 100%                 |

\*MLV each transformer must be loaded to at least 50% of its maximum load

**\*NOTE: Refer to dimmer manufacturer’s documentation for installation instructions and circuit details**

Disclaimer: Minimum and maximum loads for LEDs and CFLs are given in number of lamps and may vary depending on the lamp being used. Testing conducted by ELCO Lighting is not a substitute for and does not imply certification by an independent laboratory or any other standards certification. Refer to manufacturer specifications for more detailed information on product certifications and standards.

Integrating our lighting with your Smart Home System is a breeze. Simply check your Smart Home system for compatible smart switches and cross reference that with our Dimming Compatibility Chart. Once the switches are integrated with your Smart Home system your lights will be ready to go.



2042 E. Vernon Ave. Vernon CA 90058 Tel 323.231.2600 Fax 323.231.3200 elcolighting.com