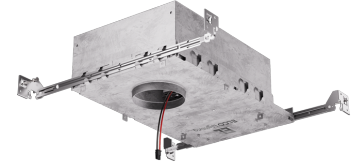


2" Koto™ Architectural Shallow Maximum Adjustability IC Airtight Housing



Koto™ Architectural Housing: 120/277V (0-10V/Triac/ELV) or 120V (Triac/ELV), and ICALWN (Lutron Athena Wireless Node) with optional Emergency Battery Backup. Must be used with Koto™ Architectural LED Light Engines (ELK19, ELK21, or ELK24 Series). Lumen output based on module.

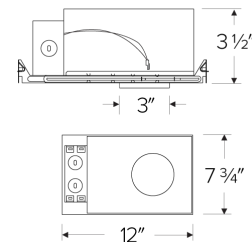
Features

- IC Airtight for direct contact with insulation.
- Easy-to-Remove driver.
- Optional 90 minutes, 120/277 VAC, 60Hz, Emergency Backup.
- Flicker-Free Dimming.
- USA designed and assembled.
- Limited 5 year warranty.
- For use with ELCO Koto™ Architectural LED Light Engines (ELK19, ELK21 or ELK24 Series).
- Optional Accessory: [2" Koto™ Housing Ceiling Extension Collar](#)

Specifications

Wattage	14.7W
Lumens	1000 (ELK19) - 1200 (ELK21) - 1500 (ELK24) lm
Voltage	120/277V or 120V
Dimmable	Triac/ELV, 0-10V/Triac/ELV, DALI 2
Lamp Type	LED
Power Factor	≥0.95
Damp Location	Listed

Dimensions



Technical Details

Construction: Single Wall IC Rated for direct contact with insulation. For use in IC and Non-IC conditions. Up to 1100 lumens. Housing accommodates up to 3/8" ceiling thickness. Airtight housing with gasket to restrict airflow in accordance with ASTM E-283 air-tight requirements.

Installation: Designed for ceiling plenums where 2x6 joists or taller are used. High strength hanger bars can easily be nailed to joists. Suitable for T-grid and drop ceiling applications. See installation sheet for detailed information. Emergency Battery Back-up Option requires access from above. For use with ELCO Koto™ Architectural LED Light Engines (ELK19, ELK21, or ELK21 Series).

Junction Box: Positioned to accommodate straight conduit runs. Two 3/4" knockouts, Seven 1/2" trade size conduit knockouts, One 3/8" knockout. Four Pry-out knockout slots for easy romex installation.

Hanger Bars: Pre Installed hanger bars with True Nail easy installation in regular lumber, engineered lumber, and Laminated Beams. Integral T-bar slots for easy installation in T-Bars. Spans up 24" and can be repositioned 90°. Score lines allow for tool-free hanger bar size reduction. Integral leveling flange allows for single-person installation while easily aligning the housings with the joists.

Electrical: Driver is rated for 120V and 277V input (120/277V). High Efficiency driver with a power factor > 0.95.

Emergency Battery Pack: Optional 90 minute battery pack available with test indicator switch. Note that double wall housings require Access From Above Ceiling for Battery Maintenance.

Dimmability: 3-in-1 Dimming: Triac, ELV and 0-10V dimming in one driver. 0-10V Dimming down to 5% with a compatible dimmer. ICALWN - Lutron Athena Wireless Node. Can be specified with Lutron drivers for 0.1% and 1% dimming. For a full list of dimmers refer to the Dimmer Compatibility List.

Listings: cUL Listed for Damp Location and for Wet Location with select trims. cUL Listed for Direct Contact with Insulation and Combustible Material. cUL Listed for Feed Through.

Product Numbers

Item	Description	Lamp type	Lumens	Watts	Voltage	Dimming
E2LK341CA	Shallow Maximum Adjustability Housing	LED	1000 (ELK19) - 1200 (ELK21) - 1500 (ELK24) lm	14.7W	120V	Triac/ELV
E2LK351CAD	Shallow Maximum Adjustability Housing	LED	1000 (ELK19) - 1200 (ELK21) - 1500 (ELK24) lm	14.7W	120/277V	0-10V/Triac/ELV
E2LK351CADAL	Shallow Maximum Adjustability Housing	LED	1000 (ELK19) - 1200 (ELK21) - 1500 (ELK24) lm	14.7W	120/277V	DALI 2

Product Number Builder

Example: **E2LK34ICA**

Koto™ Architectural Housing

Voltage

Dimming

E2LK

34 120V ¹

35 120/277V ²

ICA Triac/ELV

ICAD 0-10V/Triac/ELV

ICALWN Lutron Athena Wireless

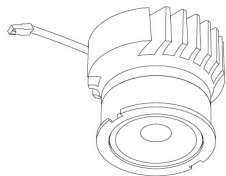
¹ Available as 120V, Triac/ELV only

² Available as 120/277V, 0-10V/Triac/ELV only

Compatible Products

For use with Dedicated 2" Koto Architectural ICA LED Housings

Koto™ Architectural LED Light Engine



Koto™ LED Light Engine
ELK19, ELK21 & ELK24

PRODUCT NUMBER BUILDER			
Koto™ LED Light Engine	Lumens	Color Temperature	Beam Angle
ELK			
19	750 - 850 lm*	27D 2700K	(blank) 38° lens (Standard)
21	1100 - 1500 lm*	30D 3000K	-S 18° lens
24	1100 - 1800 lm*	35D 3500K	-N 25° lens
		40D 4000K	-W 60° lens
		SD Sunset Dimming (ELK19 Only)	-FC 18° - 50° Adjustable (ELK21 Only)

*Wattage based on housing.

ACCESSORIES



Lens

- EP731C** 18° Lens
- EP732C** 25° Lens
- EP733C** 38° Lens
- EP734C** 60° Lens

*EP732C, EP733C, EP734C Included



Shoot

- L50W** White
- L50B** Black



Secondary Optics

- L45** Hex Louver
- L46** Linear Lens
- L47** Spread Louver
- L49** Frosted Lens
- L51** Color Shifter

2" Pex™ Twist-On Trims



Round Deep Reflector

ELK2818

Finishes:
(W, B, H, BB, BZ)



Round Adjustable Reflector

ELK2829

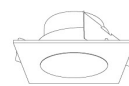
Finishes:
(W, B, H, BB, BZ)



Round Adjustable Pinhole

ELK2827

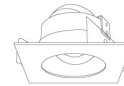
Finishes:
(W, B, BB, BZ)



Square Deep Reflector

ELK2518

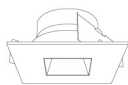
Finishes:
(W, B, BB)



Square Adjustable Reflector

ELK2529

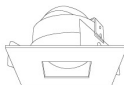
Finishes:
(W, B, BB)



Square Reflector

ELK2541

Finishes:
(W, B, BB)



Square Adjustable Pinhole

ELK2527

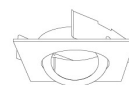
Finishes:
(W, B, BB)



Round Gimbal

ELK2888

Finishes:
(W, B, BZ)



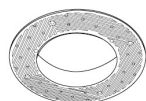
Square Gimbal

ELK2588

Finishes:
(W, BZ)

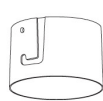
2" Pex™ Trimless

Only for use with E2LK41ICA, E2LK42ICAD, E2LK94ICA & E2LK95ICAD Housings



Spackle Frame

EL2SFR



Adjustable Trimless Reflector

ELK215

Finishes:
(W, B)