

2" Koto™ Architectural Maximum Adjustability High Lumen IC Airtight Housing



Koto™ Architectural Housing: 120/277V (0-10V/Triac/ELV) or 120V (Triac/ELV), and ICALWN (Lutron Athena Wireless Node) with optional Emergency Battery Backup. Must be used with Koto™ Architectural LED Light Engines (ELK21 and ELK24 Series). Lumen output based on module.

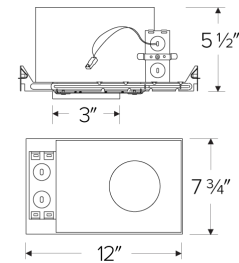
Features

- IC Airtight for direct contact with insulation.
- Easy-to-Remove driver.
- MAX. 35° adjustability.
- Optional 90 minutes, 120/277 VAC, 60Hz, Emergency Backup.
- Flicker-Free Dimming.
- USA designed and assembled.
- Limited 5 year warranty.
- For use with ELCO Koto™ Architectural LED Light Engines (ELK21 and ELK24 Series).

Specifications

| | |
|----------------------|----------|
| Wattage | 18.9W |
| Lumens | 1500 lm |
| Voltage | 120/277V |
| Dimmable | DALI 2 |
| Lamp Type | LED |
| Power Factor | ≥0.95 |
| Damp Location | Listed |

Dimensions



Technical Details

Construction: Double Wall IC Rated for direct contact with insulation. For use in IC and Non-IC conditions. Up to 1500 lumens. Housing accommodates up to 3/8" ceiling thickness. Airtight housing with gasket to restrict airflow in accordance with ASTM E-283 air-tight requirements.

Installation: Designed for ceiling plenums where 2x6 joists or taller are used. High strength hanger bars can easily be nailed to joists. Suitable for T-grid and drop ceiling applications. See installation sheet for detailed information. Emergency Battery Back-up Option requires access from above. For use with ELCO Koto™ Architectural LED Light Engines (ELK21 and ELK24 Series).

Junction Box: Positioned to accommodate straight conduit runs. Two 3/4" knockouts, Seven 1/2" trade size conduit knockouts, One 3/8" knockout. Four Pry-out knockout slots for easy romex installation.

Hanger Bars: Pre Installed hanger bars with True Nail easy installation in regular lumber, engineered lumber, and Laminated Beams. Integral T-bar slots for easy installation in T-Bars. Spans up 24" and can be repositioned 90°. Score lines allow for tool-free hanger bar size reduction. Integral leveling flange allows for single-person installation while easily aligning the housings with the joists.

Electrical: Driver is rated for 120V and 277V input (120/277V). High Efficiency driver with a power factor > 0.95.

Emergency Battery Pack: Optional 90 minute battery pack available with test indicator switch. Note that double wall housings require Access From Above Ceiling for Battery Maintenance.

Dimmability: 3-in-1 Dimming: Triac, ELV and 0-10V dimming in one driver. 0-10V Dimming down to 1% with a compatible dimmer. ICALWN - Lutron Athena Wireless Node. Can be specified with Lutron drivers for 0.1% and 1% dimming. For a full list of dimmers refer to the Dimmer Compatibility List.

Listings: cUL Listed for Damp Location and for Wet Location with select trims. cUL Listed for Direct Contact with Insulation and Combustible Material. cUL Listed for Feed Through.

Product Number

| Item | Description | Lamp type | Lumens | Watts | Voltage | Dimming |
|--------------|--|-----------|---------|-------|----------|---------|
| E2LK95ICADAL | High Lumen Maximum Adjustability Housing | LED | 1500 lm | 18.9W | 120/277V | DALI 2 |

Product Number Builder

Example: **E2LK41ICA**

Koto™ Architectural High Lumen Housing

Voltage (Wattage)

Dimming

E2LK

41 120V (15.7W) ¹

42 120/277V (15.7W) ²

94 120V (18.9W) ¹

95 120/277V (18.9W) ²

ICA Triac/ELV

ICAD 0-10V/Triac/ELV ³

ICALWN Lutron Athena Wireless

¹ Available as 120V, Triac/ELV only

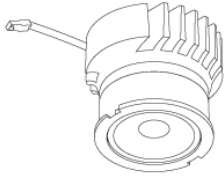
² Available as 120/277V, 0-10V/Triac/ELV only

³ 1% Dimming

Compatible Products

For use with Dedicated 2" Koto Architectural ICA LED Housings

Koto™ Architectural LED Light Engine



Koto™ LED Light Engine
ELK21 & ELK24

| PRODUCT NUMBER BUILDER | | | |
|------------------------|--------------------|-------------------|---------------------------------------|
| Koto™ LED Light Engine | Lumens | Color Temperature | Beam Angle |
| ELK | | | |
| | 21 1100 - 1500 lm* | 27D 2700K | (blank) 38° lens (Standard) |
| | 24 1100 - 1800 lm* | 30D 3000K | -S 18° lens |
| | | 35D 3500K | -N 25° lens |
| | | 40D 4000K | -W 60° lens |
| | | | -FC 18° - 50° Adjustable (ELK21 Only) |

**Wattage based on housing.*

ACCESSORIES



Lens

- EP731C 18° Lens
- EP732C 25° Lens
- EP733C 38° Lens
- EP734C 60° Lens

**EP732C, EP733C, EP734C Included*



Snoot

- L50W White
- L50B Black



Secondary Optics

- L45 Hex Louver
- L46 Linear Lens
- L47 Spread Louver
- L49 Frosted Lens
- L51 Color Shifter

2" Pex™ Twist-On Trims



Round Deep Reflector

ELK2818
Finishes:
(W, B, H, BB, BZ)



Round Adjustable Reflector

ELK2829
Finishes:
(W, B, H, BB, BZ)



Round Adjustable Pinhole

ELK2827
Finishes:
(W, B, BB, BZ)



Square Deep Reflector

ELK2518
Finishes:
(W, B, BB)



Square Adjustable Reflector

ELK2529
Finishes:
(W, B, BB)



Square Reflector

ELK2541
Finishes:
(W, B, BB)



Square Adjustable Pinhole

ELK2527
Finishes:
(W, B, BB)



Round Gimbal

ELK2888
Finishes:
(W, B, BZ)



Square Gimbal

ELK2588
Finishes:
(W, BZ)

2" Pex™ Trimless

Only for use with E2LK41ICA, E2LK42ICAD, E2LK94ICA & E2LK95ICAD Housings



Spackle Frame

EL2SFR



Adjustable Trimless Reflector

ELK215
Finishes:
(W, B)

*Finishes: **W** - All White, **BB** - All Black, **BZ** - All Bronze,
B - Black Reflector w/White Ring, **H** - Haze Reflector w/White Ring