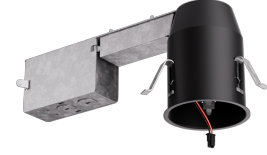


# 2" IC Airtight Remodel Housing for Koto™ Architectural LED Light Engine

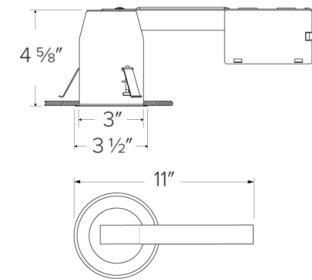


## Features

- IC Airtight for direct contact with insulation.
- Koto™ Architectural Housing: 120V Triac/ELV.
- Must be used with Architectural Koto™ LED Light Engines (ELK19, ELK21, or ELK24 Series).
- Lumen output based on module.

## Specifications

<b>Wattage</b>	10.5W
<b>Lumens</b>	750 (ELK19) - 950 (ELK21) - 1100 (ELK24) lm
<b>Voltage</b>	120V
<b>Dimmable</b>	Triac/ELV
<b>CRI</b>	90+
<b>Wet Location</b>	Listed
<b>Damp Location</b>	Listed



## Technical Details

**Lamp:** Designed for use with ELCO Architectural Koto™ LED Light Engines (ELK19, ELK21, or ELK24 Series).

### Construction:

- IC Rated for direct contact with insulation, for use in IC or Non-IC conditions.
- Housing accommodates up to 1 1/2" ceiling thickness.
- Airtight housing with gasket to restrict airflow in accordance with ASTM E-283 air-tight requirements.

**Installation:** Designed for ceiling plenums where 2x6 joists or taller joists are used. Maximum hole cutout is 3 1/4". See installation sheet for detailed information.

**Junction Box:** Positioned to accommodate straight conduit runs. Seven 1/2" trade size conduit knockouts, four 3/4" knockouts. Pry-out knockout slots. 4 Romex pryouts with strain relief.

**Electrical:** Input Voltage: 120V. High efficiency driver with power factor >0.9

**Dimmability:** Triac/ELV

### Listings:

- cUL Listed for Damp Location.
- cUL Listed for Wet Location with select trims.
- cUL Listed for Feed Through.
- cUL Listed for Direct Contact with Insulation and Combustible Material.
- Airtight per ASTM E-283.
- Install a JA8-2016-E lamp/luminaire for Title 24 Compliance.

**Warranty:** ELCO Lighting warrants products will be free from defects in materials and workmanship for a period of 5 years.

## Product Numbers

Item	Description	Lumens	Watts	Voltage	Dimming
<b>E2LK57RICA</b>	Remodel	750 (ELK19) - 950 (ELK21) - 1100 (ELK24) lm	10.5W	120V	Triac/ELV

**Product Number Builder** Example: **E2LK57RICA**

---

2" Koto™ Standard ICA Remodel Housing

Voltage

Dimming

**E2LK**

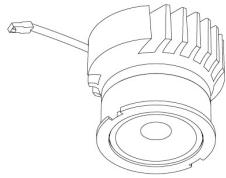
**57** 120V

**RICA** Triac/ELV

# Compatible Products

For use with Dedicated 2" Koto Architectural ICA LED Housings

## Koto™ Architectural LED Light Engine



**Koto™ LED Light Engine**  
ELK19, ELK21 & ELK24

PRODUCT NUMBER BUILDER			
Koto™ LED Light Engine	Lumens	Color Temperature	Beam Angle
ELK			
19	750 - 850 lm*	27D 2700K	(blank) 38° lens (Standard)
21	1100 - 1500 lm*	30D 3000K	-S 18° lens
24	1100 - 1800 lm*	35D 3500K	-N 25° lens
		40D 4000K	-W 60° lens
		SD Sunset Dimming (ELK19 Only)	-FC 18° - 50° Adjustable (ELK21 Only)

\*Wattage based on housing.

### ACCESSORIES



#### Lens

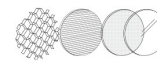
- EP731C** 18° Lens
- EP732C** 25° Lens
- EP733C** 38° Lens
- EP734C** 60° Lens

*\*EP732C, EP733C, EP734C Included*



#### Shoot

- L50W** White
- L50B** Black



#### Secondary Optics

- L45** Hex Louver
- L46** Linear Lens
- L47** Spread Louver
- L49** Frosted Lens
- L51** Color Shifter

## 2" Pex™ Twist-On Trims



**Round Deep Reflector**

**ELK2818**

Finishes:

(W, B, H, BB, BZ)



**Round Adjustable Reflector**

**ELK2829**

Finishes:

(W, B, H, BB, BZ)

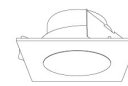


**Round Adjustable Pinhole**

**ELK2827**

Finishes:

(W, B, BB, BZ)

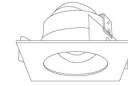


**Square Deep Reflector**

**ELK2518**

Finishes:

(W, B, BB)

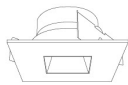


**Square Adjustable Reflector**

**ELK2529**

Finishes:

(W, B, BB)

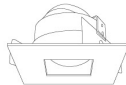


**Square Reflector**

**ELK2541**

Finishes:

(W, B, BB)



**Square Adjustable Pinhole**

**ELK2527**

Finishes:

(W, B, BB)

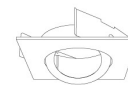


**Round Gimbal**

**ELK2888**

Finishes:

(W, B, BZ)



**Square Gimbal**

**ELK2588**

Finishes:

(W, BZ)

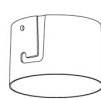
## 2" Pex™ Trimless

*Only for use with E2LK41ICA, E2LK42ICAD, E2LK94ICA & E2LK95ICAD Housings*



**Spackle Frame**

**EL2SFR**



**Adjustable Trimless Reflector**

**ELK215**

Finishes:

(W, B)