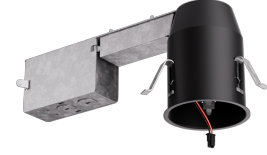


2" IC Airtight Remodel Housing for Koto™ Architectural LED Light Engine

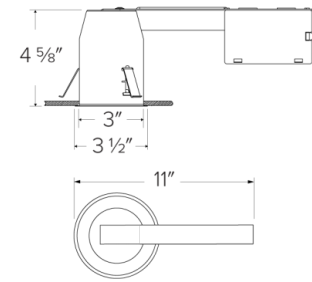


Features

- IC Airtight for direct contact with insulation.
- Koto™ Architectural Housing: 120V Triac/ELV.
- Must be used with Architectural Koto™ LED Light Engines (ELK19, ELK21, or ELK24 Series).
- Lumen output based on module.

Specifications

Wattage	10.5W
Lumens	750 (ELK19) - 950 (ELK21) - 1100 (ELK24) lm
Voltage	120V
Dimmable	Triac/ELV
CRI	90+
Wet Location	Listed
Damp Location	Listed



Technical Details

Lamp: Designed for use with ELCO Architectural Koto™ LED Light Engines (ELK19, ELK21, or ELK24 Series).

Construction:

- IC Rated for direct contact with insulation, for use in IC or Non-IC conditions.
- Housing accommodates up to 1 1/2" ceiling thickness.
- Airtight housing with gasket to restrict airflow in accordance with ASTM E-283 air-tight requirements.

Installation: Designed for ceiling plenums where 2x6 joists or taller joists are used. Maximum hole cutout is 3 1/4". See installation sheet for detailed information.

Junction Box: Positioned to accommodate straight conduit runs. Seven 1/2" trade size conduit knockouts, four 3/4" knockouts. Pry-out knockout slots. 4 Romex pryouts with strain relief.

Electrical: Input Voltage: 120V. High efficiency driver with power factor >0.9

Dimmability: Triac/ELV

Listings:

- cUL Listed for Damp Location.
- cUL Listed for Wet Location with select trims.
- cUL Listed for Feed Through.
- cUL Listed for Direct Contact with Insulation and Combustible Material.
- Airtight per ASTM E-283.
- Install a JA8-2016-E lamp/luminaire for Title 24 Compliance.

Warranty: ELCO Lighting warrants products will be free from defects in materials and workmanship for a period of 5 years.

Product Numbers

Item	Description	Lumens	Watts	Voltage	Dimming
E2LK57RICA	Remodel	750 (ELK19) - 950 (ELK21) - 1100 (ELK24) lm	10.5W	120V	Triac/ELV

Product Number Builder Example: **E2LK57RICA**

2" Koto™ Standard ICA Remodel Housing

Voltage

Dimming

E2LK

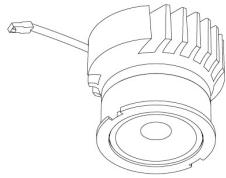
57 120V

RICA Triac/ELV

Compatible Products

For use with Dedicated 2" Koto Architectural ICA LED Housings

Koto™ Architectural LED Light Engine



Koto™ LED Light Engine
ELK19, ELK21 & ELK24

PRODUCT NUMBER BUILDER			
Koto™ LED Light Engine	Lumens	Color Temperature	Beam Angle
ELK			
19	750 - 850 lm*	27D 2700K	(blank) 38° lens (Standard)
21	1100 - 1500 lm*	30D 3000K	-S 18° lens
24	1100 - 1800 lm*	35D 3500K	-N 25° lens
		40D 4000K	-W 60° lens
		SD Sunset Dimming (ELK19 Only)	-FC 18° - 50° Adjustable (ELK21 Only)

*Wattage based on housing.

ACCESSORIES



Lens

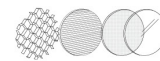
- EP731C** 18° Lens
- EP732C** 25° Lens
- EP733C** 38° Lens
- EP734C** 60° Lens

**EP732C, EP733C, EP734C Included*



Shoot

- L50W** White
- L50B** Black



Secondary Optics

- L45** Hex Louver
- L46** Linear Lens
- L47** Spread Louver
- L49** Frosted Lens
- L51** Color Shifter

2" Pex™ Twist-On Trims



Round Deep Reflector

ELK2818

Finishes:
(W, B, H, BB, BZ)



Round Adjustable Reflector

ELK2829

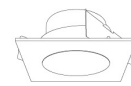
Finishes:
(W, B, H, BB, BZ)



Round Adjustable Pinhole

ELK2827

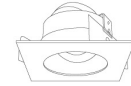
Finishes:
(W, B, BB, BZ)



Square Deep Reflector

ELK2518

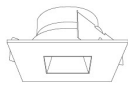
Finishes:
(W, B, BB)



Square Adjustable Reflector

ELK2529

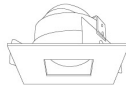
Finishes:
(W, B, BB)



Square Reflector

ELK2541

Finishes:
(W, B, BB)



Square Adjustable Pinhole

ELK2527

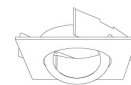
Finishes:
(W, B, BB)



Round Gimbal

ELK2888

Finishes:
(W, B, BZ)



Square Gimbal

ELK2588

Finishes:
(W, BZ)

2" Pex™ Trimless

Only for use with E2LK41ICA, E2LK42ICAD, E2LK94ICA & E2LK95ICAD Housings



Spackle Frame

EL2SFR



Adjustable Trimless Reflector

ELK215

Finishes:
(W, B)