

2" IC Airtight HIGHTECH Housings



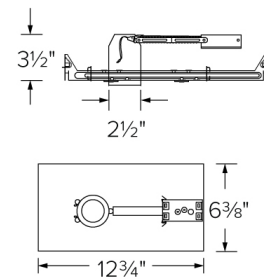
Features

- Single Wall IC listed for direct contact with insulation.
- Triac/ELV/0-10V (120-277V), Triac/ELV (120V only).
- Height allows for use in 2x4 construction.
- Driver included on housing.
- CA Title 24 compliant (JA8-2016-E).
- LED Light Engine sold separately.
- U.S. Patent 10,281,131.

Specifications

| | |
|---------------------|-------------------------------|
| Wattage | 11W |
| Voltage | 120/277V or 120V |
| Dimmable | Triac/ELV/0-10V, Triac/ELV |
| Wet Location | Listed |

Dimensions



Technical Details

Construction:

- IC Rated for Direct Contact with Insulation, for use in IC and Non-IC conditions.
- Housing adjusts in frame to accommodate up to 1 1/4" ceiling thickness.
- Aluminum housing for greater heat dissipation. Stamped galvanized steel frame.
- Driver mounted on junction box for cooler LED operation.

Installation: Designed for shallow ceiling plenums where 2x4 joists or taller are used. High strength hanger bars can easily be nailed to joists. Maximum hole cutout is 2 5/8". Suitable for T-grid and drop ceiling applications. See installation sheet for detailed information.

Junction Box: Positioned to accommodate straight conduit runs. Two 1/4" trade size pry-out knockouts with conduit fitting provided.

Hanger Bars: Pre-installed hanger bars with True Nail easy installation in regular lumber, engineered lumber, and Laminated Beams. Integral T-bar slots for easy installation in T-Bars. Spans up 24" and can be repositioned 90°. Score lines allow for tool-free hanger bar size reduction. Integral leveling flange allows for single-person installation while aligning the housings with the joists.

Electrical: Driver connects to 120V only or 120/277V power supply. High Efficiency driver with a power factor > 0.9.

Dimmability: Works with 120V Triac and ELV type dimmers, and 120-277V 0-10V dimming. Dims down to 10%. For full list of dimmers refer to the Dimmer Compatibility List.

Trims: Compatible with - E210C18, E213C18, E214C18, E215C18, E218C18, E219C18 series.

Listings: cUL Listed for Wet Location. cUL Listed for Direct Contact with Insulation and Combustible Material. cUL Listed for Feed Through. Meets restricted airflow requirements (per ASTM E-283). Meets California Title 24 (JA8-2016-E) standards.

Warranty: ELCO Products are built to last with a 5-year Limited warranty.

Product Numbers

| Item | Watts | Voltage | Dimming |
|-------------------|-------|----------|-----------------|
| E2LCU86ICA | 11W | 120/277V | Triac/ELV/0-10V |
| E2LC185ICA | 11W | 120V | Triac/ELV |

Compatible Products

For use 2" IC LED High Tech Housings

2" Alder™ High Lumen LED Light Engines



Round Reflector

| CAT NO. | SPECIFICATIONS |
|------------|---------------------|
| E210C1827W | 11W, 1000 lm, 2700K |
| E210C1830W | 11W, 1050 lm, 3000K |
| E210C1835W | 11W, 1100 lm, 3500K |
| E210C1840W | 11W, 1135 lm, 4000K |
| E210C18SDW | 11W, 800 lm, Sunset |



Round Baffle

| CAT NO. | SPECIFICATIONS |
|------------|---------------------|
| E214C1827W | 11W, 1000 lm, 2700K |
| E214C1830W | 11W, 1050 lm, 3000K |
| E214C1835W | 11W, 1100 lm, 3500K |
| E214C1840W | 11W, 1135 lm, 4000K |
| E214C18SDW | 11W, 800 lm, Sunset |



Square Reflector

| CAT NO. | SPECIFICATIONS |
|------------|---------------------|
| E213C1827W | 11W, 1000 lm, 2700K |
| E213C1830W | 11W, 1040 lm, 3000K |
| E213C1835W | 11W, 1100 lm, 3500K |
| E213C1840W | 11W, 1125 lm, 4000K |
| E213C18SDW | 11W, 800 lm, Sunset |



Square Baffle

| CAT NO. | SPECIFICATIONS |
|------------|---------------------|
| E215C1827W | 11W, 1000 lm, 2700K |
| E215C1830W | 11W, 1040 lm, 3000K |
| E215C1835W | 11W, 1100 lm, 3500K |
| E215C1840W | 11W, 1125 lm, 4000K |
| E215C18SDW | 11W, 800 lm, Sunset |



Round Adjustable

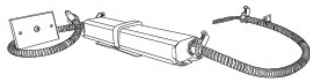
| CAT NO. | SPECIFICATIONS |
|------------|---------------------|
| E218C1827W | 11W, 1040 lm, 2700K |
| E218C1830W | 11W, 1100 lm, 3000K |
| E218C1835W | 11W, 1150 lm, 3500K |
| E218C1840W | 11W, 1200 lm, 4000K |
| E218C18SDW | 11W, 800 lm, Sunset |



Square Adjustable

| CAT NO. | SPECIFICATIONS |
|------------|---------------------|
| E219C1827W | 11W, 1030 lm, 2700K |
| E219C1830W | 11W, 1090 lm, 3000K |
| E219C1835W | 11W, 1140 lm, 3500K |
| E219C1840W | 11W, 1190 lm, 4000K |
| E219C18SDW | 11W, 800 lm, Sunset |

2" Alder™ Accessories



Emergency Battery Backup

| CAT NO. | SPECIFICATIONS |
|---------|--------------------|
| KEM-LD3 | 8W, Up to 750 lm |
| KEM-LD4 | 12W, Up to 1100 lm |



Fire Cover

| CAT NO. | SPECIFICATIONS |
|---------|---------------------|
| FIRECVR | 9 3/4" H x 17" O.D. |



Fire Enclosure

| CAT NO. | SPECIFICATIONS |
|------------|-------------------------------|
| FIREENCL | 20 3/8" L x 14 3/8" W |
| FIREENCL-S | Shallow, 16" L x 14 3/8" W |



Mica Fire Tape

| CAT NO. | SPECIFICATIONS |
|----------|----------------|
| FIRETAPE | 3/4" W x 16' L |

*Finishes: **W** - All White



ELCO Lighting

Dimmer Compatibility Chart for The Alder™ System

High Tech 0-10V/ TRIAC/ ELV

For Reference Only

Testing conducted by ELCO Lighting is not a substitute for and does not imply certification by an independent laboratory or any other standards certification. Refer to manufacturer specifications for more detailed information on product certifications and standards. Consult the dimmer manufacturer prior to installation to ensure compatibility.

| Manufacturer | Product | Part Number | Dimmed Light Output Range |
|-------------------------------|--|-------------|---------------------------|
| Triac/ELV Type Dimmers | | | |
| Eaton | AL Series, Decorator Single-Pole/3-Way Preset Dimmer | DAL06P | 10% - 100% |
| | DEVINE Decorator, Single Pole/3-Way Dimmer | DLC03P | 10% - 100% |
| | SKYE Slide, Single-Pole/3-Way Preset Dimmer | SLC03P | 10% - 100% |
| Leviton | Decora 4-Level Step Electro-Mechanical Incandescent Dimmer | 6161-W | 10% - 100% |
| | Decora Incandescent Dimmer, Single Pole Slide-to-Off with Optional Locator Light | 6631-L | 10% - 100% |
| | Decora Incandescent Dimmer, Single Pole/3-Way with Preset ON/OFF Switch | 6633-PL | 10% - 100% |
| | Trimatron Deluxe 3-Way Electro-Mechanical Incandescent Rotary Dimmer with Push ON/OFF | 6683-IW | 10% - 100% |
| | Decora Incandescent Dimmer with LED Locator | IPI06-1L | 10% - 100% |
| | Decora Single-Pole/3-Way, IllumaTech Preset Electro-Mechanical Electronic Low-Voltage Slide Dimmer | IPE04-1L | 10% - 100% |
| | Vizia+ Electronic Low Voltage Dimmer with LED Locator and Brightness Display: Neutral Required | VPE06-1L | 10% - 100% |
| Lightolier | Sunrise Quiet Electronic Low Voltage Dimmer | ZP260QE | 10% - 100% |
| Lutron | Skylark Contour® Single Pole/3-Way Incandescent/Halogen or Magnetic Low Voltage, Preset Dimmer | CT-103P | 10% - 100% |
| | Diva® Series Single Pole Dimmer | DV-600P | 10% - 100% |
| | Diva® Series 150W Single Pole/3-Way Dimmer | DVCL-153P | 5% - 86% |
| | Diva® (gloss) 3-Way, Electronic Low Voltage Dimmer | DVELV-303P | 10% - 100% |
| | Faetra® Single Pole, Electronic Low Voltage Dimmer | FAELV-500 | 10% - 100% |
| | Lumea® Gloss Single Pole, Incandescent/Halogen, Preset Dimmer | LG-600PH | 10% - 100% |
| | Maestro® (Gloss) Single Pole/Multi-Location, Electronic Low Voltage Dimmer | MAELV-600 | 10% - 100% |
| | Skylark® Series 600W Single Pole | S-600P | 10% - 100% |
| | Skylark® Single Pole/3-Way, Incandescent/Halogen, Preset, "Eco-Dim" Dimmer | S-603PG | 5% - 85% |
| | Skylark® 300W, Single Pole, Electronic Low Voltage, Preset Dimmer | SELV-300P | 10% - 100% |
| | Ariadni®/Toggler® Single Pole, Incandescent/Halogen Dimmer | TG-600P | 10% - 100% |
| | Ariadni®/Toggler® Series 150W Single Pole/3-Way Dimmer | TGCL-153P | 5% - 86% |
| | RadioRA2® Series 600W Dimmer | RRD-6ND | 12% - 100% |
| 0 – 10V Type Dimmers | | | |
| Lutron | Diva® (Gloss) Single Pole. Must be used with power pack model PP-DV (120-277V) or PP-347H (347V) | DVTV | 10% - 100% |
| | Nova® Single Pole. Must be used with power pack model PP-DV (120-277V), or PP-347H (347V) | NFTV | 10% - 100% |

*NOTE: Refer to dimmer manufacturer's documentation for installation instructions and circuit details

Disclaimer: Minimum and maximum loads for LEDs and CFLs are given in number of lamps and may vary depending on the lamp being used. Testing conducted by ELCO Lighting is not a substitute for and does not imply certification by an independent laboratory or any other standards certification. Refer to manufacturer specifications for more detailed information on product certifications and standards.

2042 E. Vernon Ave. Vernon CA 90058 Tel 323.231.2600 Fax 323.231.3200 elcolighting.com