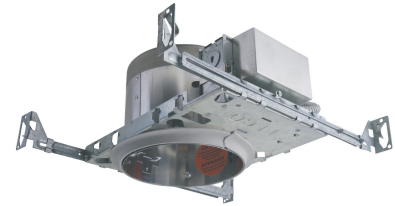


# 6" Integrated LED New Construction IC Airtight Housing



ELCO Lighting's Integrated LED Mahogany System Housings are energy efficient, high output downlights with a 3 in 1 dimmable driver (Triac/ELV/0-10V, 120/277V) installed on the frame. They are available with a plethora of trims for style options and interchangeable beam angle options. The housings have the driver, LED and heat sink integrated so only a trim is required to complete the job. The Mahogany System is a great high output LED downlight for new construction and remodel applications.

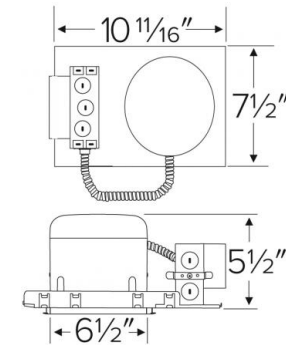
## Features

- 6" LED New Construction IC Airtight Housing includes integrated LED module and driver.
- 5 1/2" height allows for use in 2 x 6 construction.
- Advanced heat sink design for best heat dissipation to maintain maximum LED life.
- Battery backup driver available.
- Triac/ELV/0-10V.
- High output CREE LED COB.
- CA Title 24 compliant, meets ENERGY STAR requirements.
- Trims sold separately.

## Specifications

<b>Wattage</b>	18W
<b>Lumens</b>	1400 lm
<b>Voltage</b>	120/277V
<b>Color Temp.</b>	2700K - 4000K
<b>Dimmable</b>	Triac/ELV/0-10V
<b>Lamp Type</b>	LED
<b>CRI</b>	90
<b>Damp Location</b>	Listed

## Dimensions



## Technical Details

### Construction:

- Single wall IC rated for direct contact with insulation. For use in IC and non-IC conditions.
- Housing has integrated driver, heat sink and LED COB mounted onto the heat sink.
- Compatible trims can be used for beam angle options and design options.
- Housing adjusts in frame to accommodate up to 1 1/2" ceiling thickness.
- Airtight housing with gasket to restrict airflow in accordance with ASTM E-283 air-tight requirements.

**Installation:** Designed for ceiling plenums where 2x6 joists or taller are used. High strength hanger bars can easily be nailed to joists. Suitable for T-grid and drop ceiling applications. See installation sheet for detailed information.

**Junction Box:** Positioned to accommodate straight conduit runs. Seven 1/2" trade size conduit knockouts, Four pry-out knockout slots for easy romex installation.

**Hanger Bars:** Pre Installed hanger bars with True Nail easy installation in regular lumber, engineered lumber, and Laminated Beams. Integral T-bar slots for easy installation in T-Bars. Spans up 24" and can be repositioned 90°. Score lines allow for tool-free hanger bar size reduction. Integral leveling flange allows for single-person installation while easily aligning the housings with the joists.

### Electrical:

- Driver is rated for 120V and 277V input (120/277V).
- High Efficiency driver with a power factor > 0.9.
- Can be specified with Lutron drivers for specific applications.
- Optional 90 Minute 120/277V emergency backup.

### Dimmability:

- 3 in 1 dimming: Triac, ELV and 0-10V dimming in one driver.
- 0-10V dimming down to 1% with compatible dimmer.
- Flicker-Free Dimming.

## Product Numbers

Item	Lamp type	Lumens	CCT	Watts	Voltage	Dimming
<b>ELD761CA</b>	LED	1400 lm	3000K	18W	120/277V	Triac/ELV/0-10V
<b>ELD751CA</b>	LED	1400 lm	4000K	18W	120/277V	Triac/ELV/0-10V
<b>ELD771CA</b>	LED	1400 lm	2700K	18W	120/277V	Triac/ELV/0-10V

- Can be specified with Lutron drivers for specific applications.
- For full list of dimmers refer to the Dimmer Compatibility List.

**Trims:** Compatible with EL7422, EL7424.

**Listings:** UL Listed for Damp Location and for Wet Location with select trims. UL Listed for Direct Contact with Insulation and Combustible Material. UL Listed for Feed Through. ENERGY STAR® Certified. California Title 24.

**Warranty:** ELCO Products are built to last. 5-year Limited warranty.