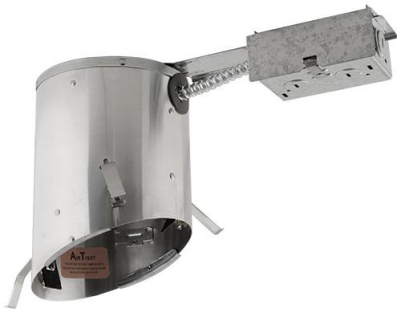


5" Sloped Ceiling IC Airtight Remodel Housing

ELCO Slant allows for installation in sloped ceilings ranging from 2/12 (10°) to 6/12 (26.5°). Can be used in insulated ceilings. Fits in 2" x 8" joist construction.



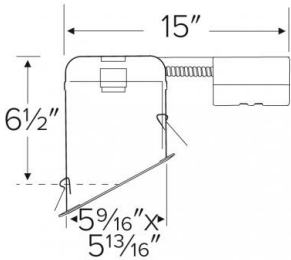
Features

- Airtight Slope IC New Construction Housing.
- Single wall aluminum construction for use in insulated ceilings.
- Designed for use in 2/12 to 6/12 sloped ceiling.
- Thermal Protector guards against improper lamping.
- Lamps: Medium Base Incandescent, CFL or LED.
- cUL Listed for damp location and for feed through.

Specifications

Wattage	75W
Voltage	120V
Lamp Type	Medium Base (E26)
Wet Location	Listed with Wet Location Trim
Damp Location	Listed

Dimensions



Technical Details

Construction:

- IC Rated for Direct Contact with Insulation.
- Designed for use in 2/12 to 6/12 sloped ceiling.
- Housing adjusts in frame to accommodate up to 1 1/4" ceiling thickness.
- Aluminum housing for greater heat dissipation.

Installation: Designed for ceiling plenums where 2x8 joists or taller are used. Template for hole cutout is provided with each housing. See installation sheet for detailed information.

Junction Box: Positioned to accommodate straight conduit runs. Seven 1/2" trade size conduit knockouts and One 3/4" knockout. Four true pry-out knockout slots for easy Romex installation.

Electrical:

- Rated for 120V or 277V input.
- For 277V step down to 120V housing consult factory.

Trims: Compatible with ELCO 5" Line Voltage Slope PAR trims.

Lamp: Designed for use with Medium Base (E26) PAR lamps up to 75W.

Listings:

- cUL Listed for Damp Location.
- cUL Listed for Direct Contact with Insulation and Combustible Material.
- cUL Listed for Feed Through.
- AirTight: Per ASTM E-283.

Product Numbers

Item	Lamp type	Watts	Voltage
EL518RICA	Medium Base (E26)	75W	120V



ELCO Lighting

Dimmer Compatibility Chart LED Sloped Ceiling

For Reference Only

Testing conducted by ELCO Lighting is not a substitute for and does not imply certification by an independent laboratory or any other standards certification. Refer to manufacturer specifications for more detailed information on product certifications and standards. Consult the dimmer manufacturer prior to installation to ensure compatibility.

Manufacturer	Product	Part Number	Dimmed Light Output Range
Eaton	Decorator Single Pole/3-Way dimmer	DLC03P	10% - 100%
Leviton	Decora SureSlide® Single Pole Slide-To-Off w ith Optional Locator Light	6631	10% - 100%
	Decora SureSlide® Single Pole/3-Way w ith Preset ON/OFF sw itch and Optional Locator Light	6633	10% - 100%
	Universal Decora Dimmable LED, CFL and Incandescent SureSlide Slide Dimmer	6672	10% - 100%
	Decora SureSlide® Universal Dimmer	6674	10% - 100%
Lutron	Skylark® Contour single pole, incandescent / halogen dimmer	CT-600P	10% - 100%
	Skylark® Contour 3-w ay, incandescent / halogen "eco-dim" dimmer	CT-603PG	5% - 85%
	Diva® (gloss) single pole, incandescent / halogen, preset dimmer	DV-600P	10% - 100%
	Diva® (gloss) 3-w ay, incandescent / halogen, preset dimmer	DV-603P	10% - 100%
	Diva® (gloss) C•L single pole/3-w ay dimmer	DVCL-153P	5% - 86%
	Maestro® C•L single pole/3-w ay/multi-location dimmer	MA CL-153M	10% - 100%
	Skylark® Series Dual Slide-to-Off dimmer	S-2	10% - 100%
	Skylark® single pole, incandescent/halogen, slide-to-off dimmer	S-600	10% - 100%
	Ariadni®/Toggler® Series 150W Single Pole/3-Way dimmer	TGCL-153P	5% - 86%

*NOTE: Refer to dimmer manufacturer's documentation for installation instructions and circuit details

Disclaimer: Minimum and maximum loads for LEDs and CFLs are given in number of lamps and may vary depending on the lamp being used. Testing conducted by ELCO Lighting is not a substitute for and does not imply certification by an independent laboratory or any other standards certification. Refer to manufacturer specifications for more detailed information on product certifications and standards.