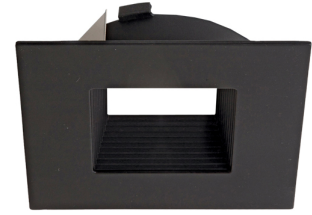


4" Diecast Square Baffle Flexa™ Trim



Features

- 2 Piece E.L.L. trims for maximum design flexibility.
- Convenient twist-lock design for ease of installation.
- Diecast construction for lasting quality.

Technical Details

Construction: Diecast aluminum with a powder coated finish.

Installation: Twist-lock design allows for easy mounting onto the E.L.L. LED Module. Clips securely mount trim into the housing and keep ring flush with the ceiling.

Compatible housing: Compatible with 4" IC and non-IC housing (non-shallow).

Lamp: E.L.L. LED Module only (ELL08, ELL11).

Options



All White



All Bronze



Black w/ White



All Black

Product Numbers

Item	Finish
ELL4643WW	All White
ELL4643BZBZ	All Bronze
ELL4643BW	Black w/ White
ELL4643BB	All Black

Product Number Builder Example: ELL4643WW

4" Square Baffle Flexa™ Trim	Baffle	Ring
ELL4643		
W White BZ Bronze B Black		W White BZ Bronze B Black